

# Anti-ABHD11 antibody

Catalog Number: 142692

## Product name

Anti-ABHD11 antibody

## Specificity

Human ABHD11

## Antibody description

Rabbit Polyclonal to Human ABHD11

## Preparation

Produced in rabbits immunized with a synthetic peptide corresponding to the C-terminus of the Human ABHD11, and purified by antigen affinity chromatography.

## Formulation

0.2 µm filtered solution in PBS

## Storage

This antibody can be stored at 2°C-8°C for one month without detectable loss of activity. Antibody products are stable for twelve months from date of receipt when stored at -20°C to -80°C.

Preservative-Free.

Sodium azide is recommended to avoid contamination (final concentration 0.05%-0.1%). It

is toxic to cells and should be disposed of properly. Avoid repeated freeze-thaw cycles.

## Clonality

Polyclonal

## Ig Type

Rabbit IgG

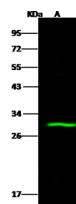
## Applications

WB

## Dilutions

WB: 5-20 µg/ml

## Validations



Items	Lanes
Sample (whole cell lysate)	A
Sample Volume (µg/Lane)	MCF7
Gel	30
Recommended Concentration	13% SDS-PAGE reducing gel
Secondary Antibody	5-20 µg/ml
Explanation	Dylight 800-labeled Antibody to Rabbit IgG (H+L), at 1:5000 dilution. Developed using Odyssey imaging system. Predicted band size : 35 kDa Observed band size : 30 kDa

Human ABHD11 Western blot (WB) 14672