

Human MAPT/MAPTL/MTBT1/TAU (His tag) recombinant protein



Catalog Number: 518292

General Information

Gene Name Synonym

Microtubule-Associated Protein Tau,
Neurofibrillary Tangle Protein, Paired Helical
Filament-Tau, PHF-Tau, MAPT, MAPTL, MTBT1,
TAU

Protein Construction

A DNA sequence encoding the Human
MAPT/MAPTL/MTBT1/TAU Gln249-Gln381 is
expressed with a 6His tag at the C-terminus.

Organism

Human

Expression Host

E. coli

QC Testing

Purity

>95% as determined by SDS-PAGE.

Endotoxin

<1.0 EU per μg protein as determined by the LAL
method.

Stability

Store for up to 12 months at -20°C to -80°C as
lyophilized powder. Aliquots of reconstituted
samples are stable at $< -20^{\circ}\text{C}$ for 3 months.

Formulation

Lyophilized from a $0.2\ \mu\text{m}$ filtered solution of
20mM PB, 150mM NaCl, pH 7.4.

Usage Guide

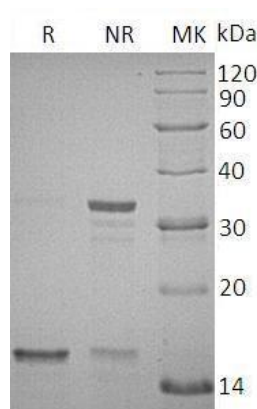
Storage

Lyophilized protein should be stored at $<-20^{\circ}\text{C}$,
though stable at room temperature for 3 weeks.
Reconstituted protein solution can be stored at
 $4-7^{\circ}\text{C}$ for 2-7 days.

Reconstitution

Always centrifuge tubes before opening. Do not
mix by vortex or pipetting. It is not recommended
to reconstitute to a concentration less than
 $100\ \mu\text{g}/\text{ml}$. Dissolve the lyophilized protein in
ddH₂O. Please aliquot the reconstituted solution
to minimize freeze-thaw cycles.

SDS-PAGE



Human MAPT/MAPTL/MTBT1/TAU (His tag)
recombinant protein