

# ATG16L2 antibody

Catalog Number: 108292

## Product name

ATG16L2 antibody

## Specificity

Human, Mouse; other species not tested.

## Antibody description

ATG16L2 Rabbit Polyclonal antibody. Positive IP detected in mouse testis tissue. Positive WB detected in mouse spleen tissue, mouse testis tissue. Observed molecular weight by Western-blot: 70 kDa, 30 kDa

## Preparation

This antibody was obtained by immunization of ATG16L2 recombinant protein (Accession Number: NM\_033388). Purification method: Antigen affinity purified.

## Formulation

PBS with 0.1% sodium azide and 50% glycerol pH 7.3.

## Storage

Store at -20°C. DO NOT ALIQUOT

## Clonality

Polyclonal

## Ig Type

Rabbit IgG

## Applications

ELISA, WB, IP

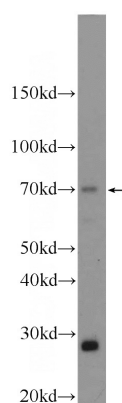
## Dilutions

Recommended Dilution:

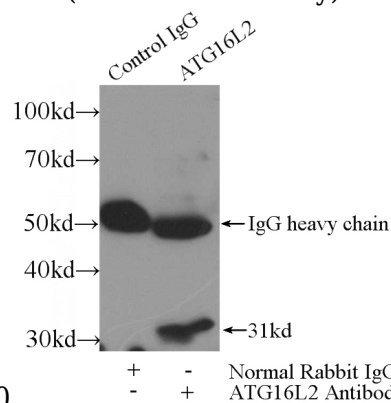
WB: 1:500-1:5000

IP: 1:200-1:2000

## Validations



mouse spleen tissue were subjected to SDS PAGE followed by western blot with Catalog No:108292(ATG16L2 Antibody) at dilution of



1:1000

IP Result of anti-ATG16L2 (IP:Catalog No:108292, 3ug; Detection:Catalog No:108292 1:700) with mouse testis tissue lysate 4800ug.