

GDI2 antibody

Catalog Number: 107292

Product name

GDI2 antibody

IHC: 1:20-1:200

IF: 1:10-1:100

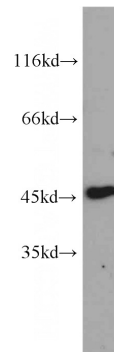
Specificity

Human, Mouse; other species not tested.

Validations

Antibody description

GDI2 Mouse Monoclonal antibody. Positive WB detected in HepG2 cells. Positive IF detected in MCF-7 cells, Hela cells. Positive IHC detected in human breast cancer tissue, human liver cancer tissue. Observed molecular weight by Western-blot: 46 kDa



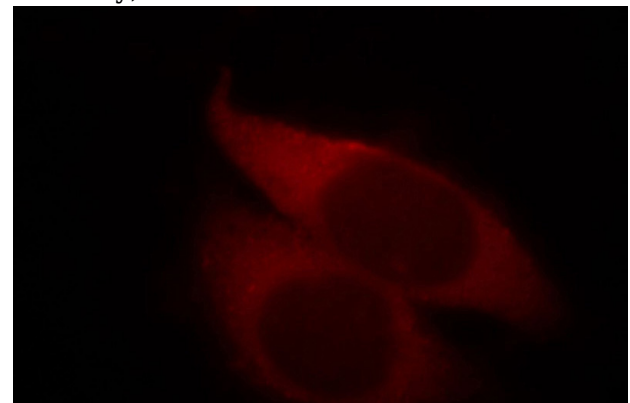
Preparation

This antibody was obtained by immunization of GDI2 recombinant protein (Accession Number: NM_001494). Purification method: Caprylic acid/ammonium sulfate precipitation.

HepG2 cells were subjected to SDS PAGE followed by western blot with Catalog No:107292(GDI2 antibody) at dilution of 1:1000

Formulation

PBS with 0.1% sodium azide and 50% glycerol pH 7.3.



Storage

Store at -20°C. DO NOT ALIQUOT

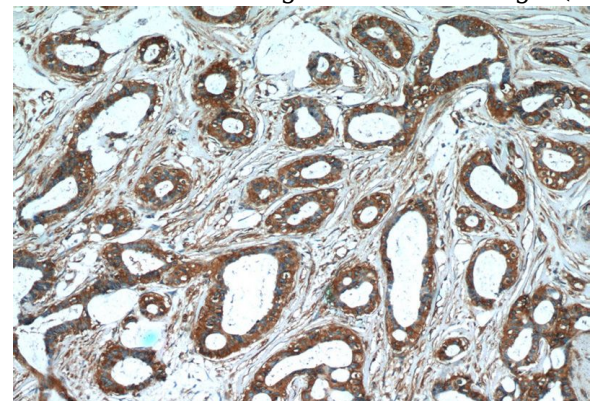
Clonality

Monoclonal

Immunofluorescent analysis of MCF-7 cells, using GDI2 antibody Catalog No: at 1:25 dilution and Rhodamine-labeled goat anti-mouse IgG (red).

Ig Type

Mouse IgG1



Applications

ELISA, WB, IF, IHC

Dilutions

Recommended Dilution:

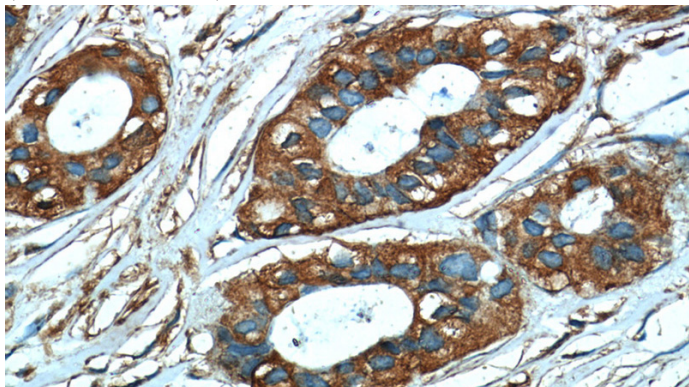
WB: 1:500-1:5000

Immunohistochemistry of paraffin-embedded human breast cancer tissue slide using Catalog

GDI2 antibody

Catalog Number: 107292

No:107292(GDI2 Antibody) at dilution of 1:50
(under 10x lens)



Immunohistochemistry of paraffin-embedded
human breast cancer tissue slide using Catalog
No:107292(GDI2 Antibody) at dilution of 1:50
(under 40x lens)