

Anti-Ezrin Rabbit antibody



Catalog Number: 167992

Product name

Anti-Ezrin Rabbit antibody

Specificity

Human, Mouse, Rat

Antibody description

Ezrin Rabbit monoclonal antibody

Preparation

Antigen: Recombinant protein of human Ezrin

Formulation

50nM Tris-Glycine(pH 7.4), 0.15M NaCl, 40%Glycerol, 0.01% sodium azide and 0.05% BSA

Storage

Store at 4°C short term. Store at -20°C long term. Avoid freeze / thaw cycle.

Clonality

Monoclonal

Ig Type

Rabbit IgG

Applications

WB, IHC-P, ICC/IF, FC, IP

Dilutions

WB: 1/1000

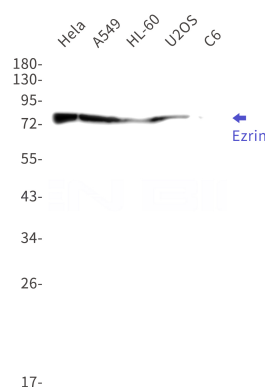
IHC: 1/200

ICC/IF: 1/20

FC: 1/50

IP: 1/20

Validations



Western blot detection of Ezrin in HeLa,A549,HL-60,U2OS,C6 cell lysates using Ezrin Rabbit mAb(1:1000 diluted).Predicted band size:69kDa.Observed band size:80kDa.