

# XPG antibody

Catalog Number: 116992

## Product name

XPG antibody

IP: 1:200-1:2000

IF: 1:20-1:200

## Specificity

Human; other species not tested.

## Antibody description

XPG Rabbit Polyclonal antibody. Positive IF detected in HeLa cells. Positive WB detected in HeLa cells, Jurkat cells, K-562 cells. Positive IP detected in HeLa cells. Observed molecular weight by Western-blot: 200 kDa

## Preparation

This antibody was obtained by immunization of XPG recombinant protein (Accession Number: NM\_000123). Purification method: Antigen affinity purified.

## Formulation

PBS with 0.1% sodium azide and 50% glycerol pH 7.3.

## Storage

Store at -20°C. DO NOT ALIQUOT

## Clonality

Polyclonal

## Ig Type

Rabbit IgG

## Applications

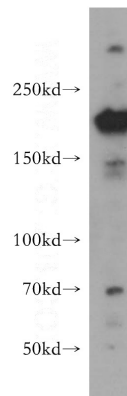
ELISA, WB, IP, IF

## Dilutions

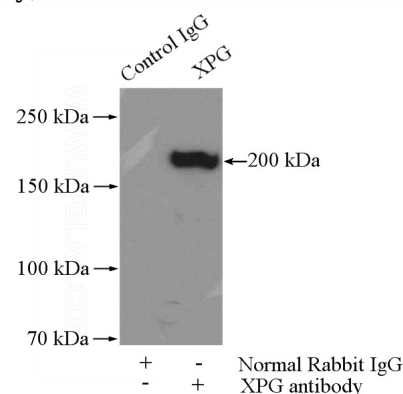
Recommended Dilution:

WB: 1:200-1:2000

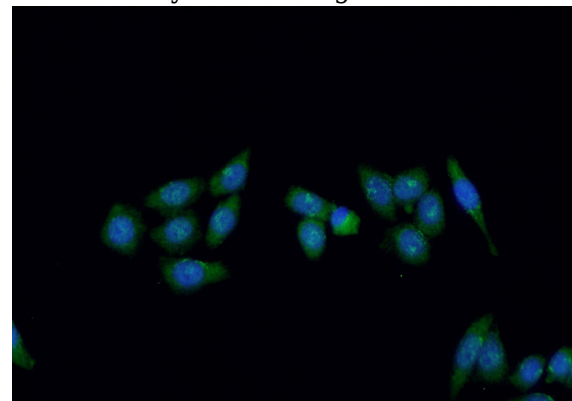
## Validations



HeLa cells were subjected to SDS PAGE followed by western blot with Catalog No:116992(ERCC5 antibody) at dilution of 1:500



IP Result of anti-ERCC5 (IP:Catalog No:116992, 4ug; Detection:Catalog No:116992 1:500) with HeLa cells lysate 1200ug.



Immunofluorescent analysis of HeLa cells using Catalog No:116992(ERCC5 Antibody) at dilution

# XPG antibody



Catalog Number: 116992

---

of 1:50 and Alexa Fluor 488-conjugated AffiniPure Goat Anti-Rabbit IgG(H+L)