

# Myoglobin antibody



Catalog Number: 112992

## Product name

Myoglobin antibody

WB: 1:500-1:5000

IHC: 1:20-1:200

## Specificity

Human, Mouse, Rat; other species not tested.

## Antibody description

Myoglobin Rabbit Polyclonal antibody. Positive IHC detected in human heart tissue. Positive WB detected in mouse skeletal muscle tissue, human brain tissue, mouse brain tissue, mouse heart tissue. Observed molecular weight by Western-blot: 18 kDa

## Preparation

This antibody was obtained by immunization of Myoglobin recombinant protein (Accession Number: XM\_005261605). Purification method: Antigen affinity purified.

## Formulation

PBS with 0.02% sodium azide and 50% glycerol pH 7.3.

## Storage

Store at -20°C. DO NOT ALIQUOT

## Clonality

Polyclonal

## Ig Type

Rabbit IgG

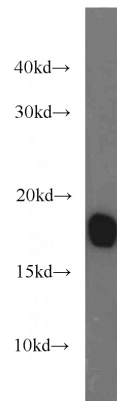
## Applications

ELISA, WB, IHC

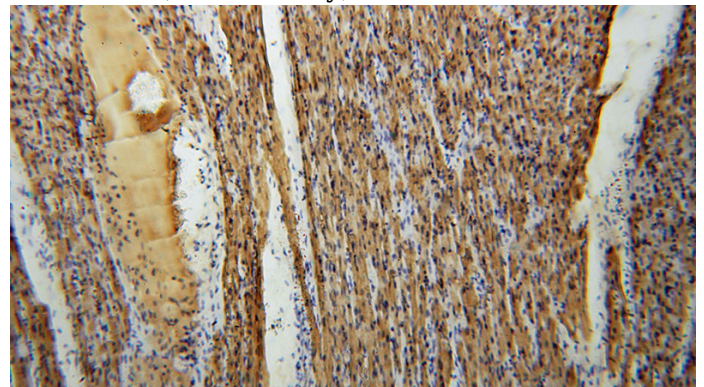
## Dilutions

Recommended Dilution:

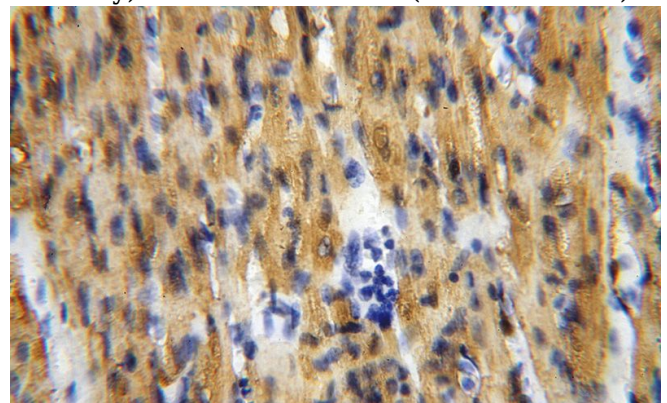
## Validations



mouse skeletal muscle tissue were subjected to SDS PAGE followed by western blot with Catalog No:112992(MB antibody) at dilution of 1:1000



Immunohistochemical of paraffin-embedded human heart using Catalog No:112992(MB antibody) at dilution of 1:100 (under 10x lens)



Immunohistochemical of paraffin-embedded human heart using Catalog No:112992(MB antibody) at dilution of 1:100 (under 40x lens)