

NR0B2 Polyclonal Antibody



Catalog Number: 163592

Product name

NR0B2 Polyclonal Antibody

Specificity

Human, Mouse, Rat

Antibody description

Polyclonal antibody to NR0B2

Preparation

Antigen: Recombinant fusion protein containing a sequence corresponding to amino acids 1-257 of human NR0B2 (NP_068804.1).

Formulation

PBS with 0.02% sodium azide, 50% glycerol, pH7.3.

Storage

Store at -20°C. Avoid freeze / thaw cycles.

Clonality

Polyclonal

Ig Type

Rabbit IgG

Applications

WB, IHC, IF

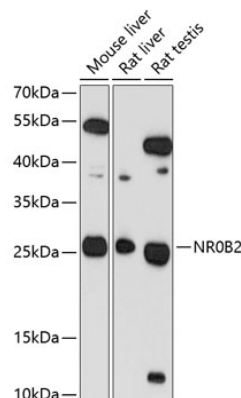
Dilutions

WB 1:500 - 1:2000

IHC 1:50 - 1:200

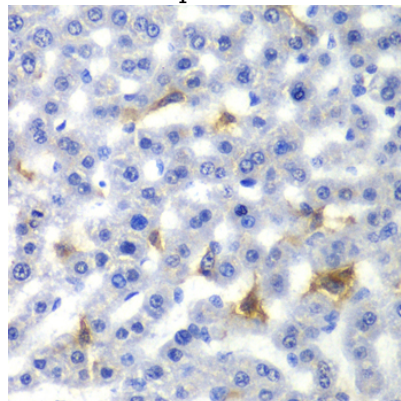
IF 1:10 - 1:100

Validations



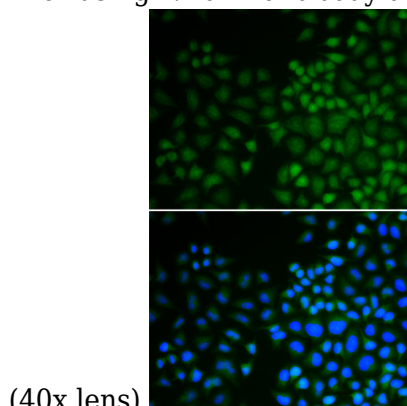
Western blot - NR0B2 Polyclonal Antibody

Western blot analysis of extracts of various cell lines, using NR0B2 antibody at 1:1000 dilution. Secondary antibody: HRP Goat Anti-Rabbit IgG (H+L) at 1:10000 dilution. Lysates/proteins: 25ug per lane. Blocking buffer: 3% nonfat dry milk in TBST. Detection: ECL Basic Kit. Exposure time: 90s.



Immunohistochemistry - NR0B2 Polyclonal Antibody

Immunohistochemistry of paraffin-embedded rat liver using NR0B2 antibody at dilution of 1:100



(40x lens).

NR0B2 Polyclonal Antibody



Catalog Number: 163592

Immunofluorescence - NR0B2 Polyclonal Antibody

Immunofluorescence analysis of U2OS cells using NR0B2 antibody . Blue: DAPI for nuclear staining.