

SERPINA10 Polyclonal Antibody



Catalog Number: 165192

Product name

SERPINA10 Polyclonal Antibody

Specificity

Human, Mouse, Rat

Antibody description

Polyclonal antibody to SERPINA10

Preparation

Antigen: Recombinant fusion protein containing a sequence corresponding to amino acids 165-444 of human SERPINA10 (NP_001094077.1).

Formulation

PBS with 0.02% sodium azide, 50% glycerol, pH7.3.

Storage

Store at -20°C. Avoid freeze / thaw cycles.

Clonality

Polyclonal

Ig Type

Rabbit IgG

Applications

WB, IHC, IF

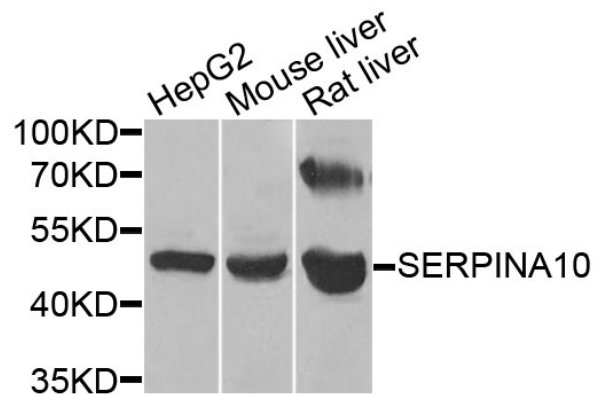
Dilutions

WB 1:500 - 1:2000

IHC 1:50 - 1:100

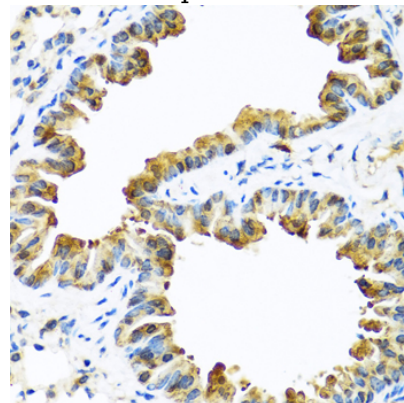
IF 1:50 - 1:100

Validations



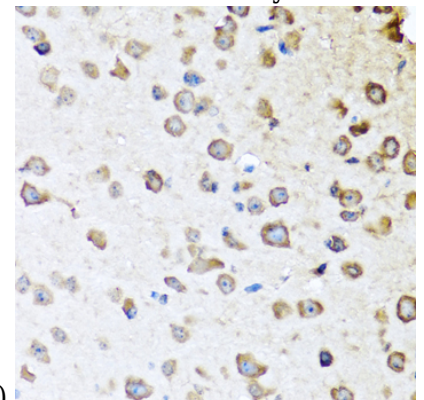
Western blot - SERPINA10 Polyclonal Antibody

Western blot analysis of extracts of various cell lines, using SERPINA10 antibody at 1:1000 dilution. Secondary antibody: HRP Goat Anti-Rabbit IgG (H+L) at 1:10000 dilution. Lysates/proteins: 25ug per lane. Blocking buffer: 3% nonfat dry milk in TBST. Detection: ECL Basic Kit. Exposure time: 120s.



Immunohistochemistry - SERPINA10 Polyclonal Antibody

Immunohistochemistry of paraffin-embedded mouse lung using SERPINA10 antibody at dilution



of 1:100 (40x lens).

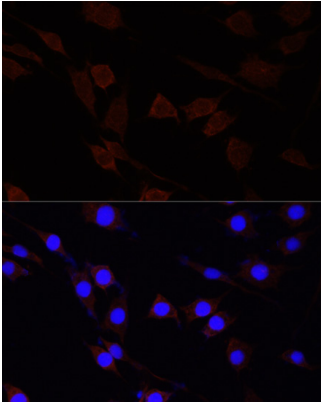
SERPINA10 Polyclonal Antibody



Catalog Number: 165192

Immunohistochemistry - SERPINA10 Polyclonal Antibody

Immunohistochemistry of paraffin-embedded mouse brain using SERPINA10 antibody at dilution of 1:100 (40x lens).



Immunofluorescence - SERPINA10 Polyclonal Antibody

Immunofluorescence analysis of PC-12 cells using SERPINA10 antibody at dilution of 1:100 (40x lens). Blue: DAPI for nuclear staining.