

# PRIM1 antibody

Catalog Number: 114192

## Product name

PRIM1 antibody

IP: 1:200-1:1000

IHC: 1:20-1:200

## Specificity

Human, Mouse, Rat; other species not tested.

## Antibody description

PRIM1 Rabbit Polyclonal antibody. Positive IHC detected in human lymphoma tissue. Positive IP detected in HeLa cells. Positive WB detected in K-562 cells, HeLa cells, Sp2/0 cells. Observed molecular weight by Western-blot: 50kd

## Preparation

This antibody was obtained by immunization of PRIM1 recombinant protein (Accession Number: NM\_000946). Purification method: Antigen affinity purified.

## Formulation

PBS with 0.1% sodium azide and 50% glycerol pH 7.3.

## Storage

Store at -20°C. DO NOT ALIQUOT

## Clonality

Polyclonal

## Ig Type

Rabbit IgG

## Applications

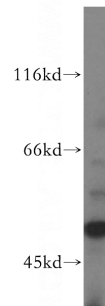
ELISA, WB, IHC, IP

## Dilutions

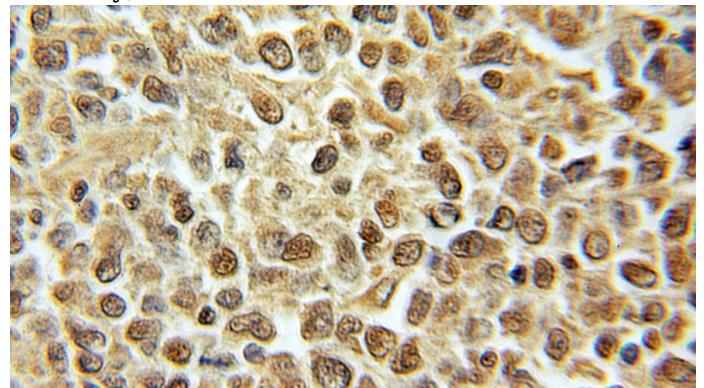
Recommended Dilution:

WB: 1:200-1:2000

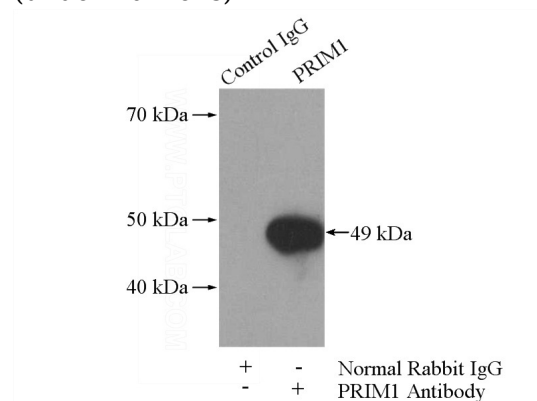
## Validations



K-562 cells were subjected to SDS PAGE followed by western blot with Catalog No:114192 (PRIM1 antibody) at dilution of 1:500



Immunohistochemical of paraffin-embedded human lymphoma using Catalog No:114192 (PRIM1 antibody) at dilution of 1:100 (under 10x lens)



IP Result of anti-PRIM1 (IP:Catalog No:114192,

# PRIM1 antibody



Catalog Number: 114192

---

4ug; Detection:Catalog No:114192 1:300) with HeLa cells lysate 2800ug.