

# YRDC antibody



Catalog Number: 116892

## Product name

YRDC antibody

WB: 1:500-1:5000

IHC: 1:50-1:500

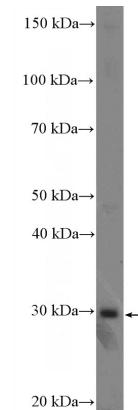
## Immunogen

[Human YRDC Recombinant protein \(His tag\)](#)

## Validations

## Specificity

Human; other species not tested.



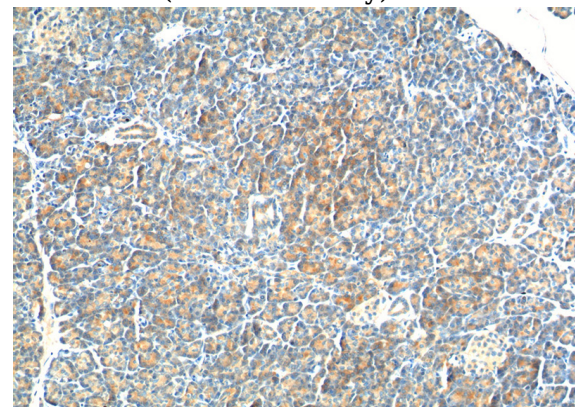
## Antibody description

YRDC Rabbit Polyclonal antibody. Positive WB detected in BxPC-3 cells. Positive IHC detected in human pancreas tissue. Observed molecular weight by Western-blot: 29 kDa

BxPC-3 cells were subjected to SDS PAGE followed by western blot with Catalog No:116892(YRDC Antibody) at dilution of 1:1000

## Preparation

This antibody was obtained by immunization of YRDC recombinant protein (Accession Number: NM\_024640). Purification method: Antigen affinity purified.



## Formulation

PBS with 0.1% sodium azide and 50% glycerol pH 7.3.

Immunohistochemistry of paraffin-embedded human pancreas tissue slide using Catalog No:116892(YRDC Antibody) at dilution of 1:200 (under 10x lens).

## Storage

Store at -20°C. DO NOT ALIQUOT

## Clonality

Polyclonal

## Ig Type

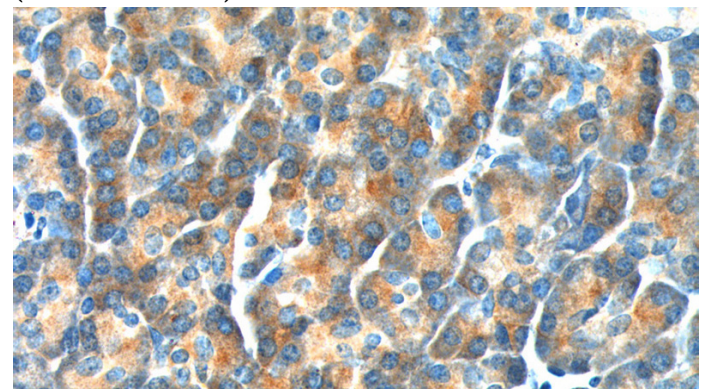
Rabbit IgG

## Applications

ELISA, WB, IHC

## Dilutions

Recommended Dilution:



Immunohistochemistry of paraffin-embedded

# YRDC antibody



Catalog Number: 116892

---

human pancreas tissue slide using Catalog

No:116892(YRDC Antibody) at dilution of 1:200  
(under 40x lens).