

# Human RAET1L (Fc Tag) recombinant protein



Catalog Number: 500892

## General Information

### Protein Construction

A DNA sequence encoding the human RAET1L (AAK91503.1) (Met1-Ser217) was expressed with the Fc region of human IgG1 at the C-terminus.

### Organism

Human

### Expression Host

Human Cells

## QC Testing

### Activity

Measured by its binding ability in a functional ELISA.

Immobilized human His-NKG2D(78-216)(Cat:504733) at 10 µg/ml (100 µl/well) can bind RAET1L-Fc, The EC<sub>50</sub> of RAET1L-Fc is 13-30ng/ml.

### Purity

> 90 % as determined by SDS-PAGE.

### Endotoxin

<1.0 EU per µg protein as determined by the LAL method.

### Stability

Samples are stable for up to twelve months from date of receipt at -70°C

### Predicted N terminal

Arg 26

## Molecular Mass

The recombinant human RAET1L consists 430 amino acids and predicts a molecular mass of 48.5 kDa.

## Formulation

Lyophilized from sterile PBS, pH 7.4.

1. 5 % trehalose and mannitol are added as protectants before lyophilization.

2. Please contact us for any concerns or special requirements.

## Usage Guide

### Storage

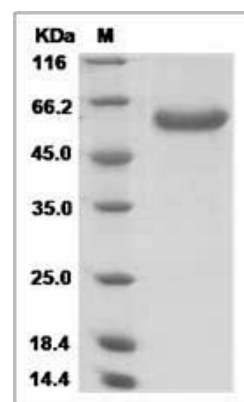
Store it under sterile conditions at -20°C to -80°C.

It is recommended that the protein be aliquoted for optimal storage. Avoid repeated freeze-thaw cycles.

### Reconstitution

Adding sterile water, prepare a stock solution of 0.25 mg/ml. Concentration is measured by UV-Vis.

## SDS-PAGE



Human RAET1L / ULBP6 Protein (Fc Tag) SDS-PAGE