

SAA3 Polyclonal Antibody



Catalog Number: 160892

Product name

SAA3 Polyclonal Antibody

Specificity

Human, Mouse, Rat

Antibody description

Polyclonal antibody to SAA3

Preparation

Antigen: A synthetic peptide of mouse SAA3P

Formulation

PBS with 0.02% sodium azide, 50% glycerol, pH7.3.

Storage

Store at -20°C. Avoid freeze / thaw cycles.

Clonality

Polyclonal

Ig Type

Rabbit IgG

Applications

WB, IHC, IF

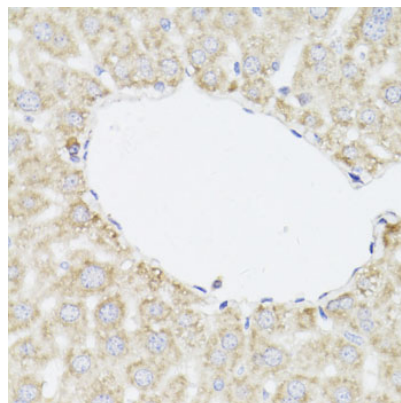
Dilutions

WB 1:500 - 1:2000

IHC 1:50 - 1:200

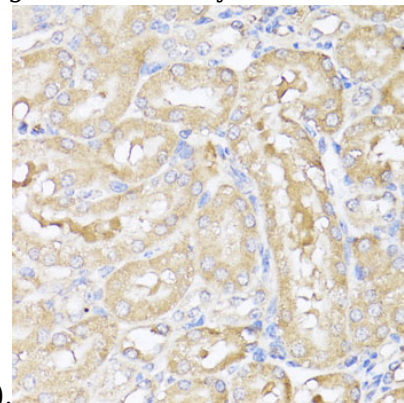
IF 1:50 - 1:200

Validations



Immunohistochemistry - SAA3 Polyclonal Antibody

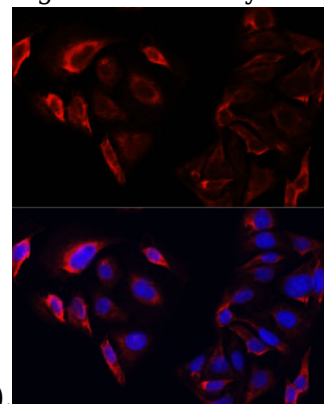
Immunohistochemistry of paraffin-embedded mouse liver using SAA3 antibody at dilution of



1:150 (40x lens).

Immunohistochemistry - SAA3 Polyclonal Antibody

Immunohistochemistry of paraffin-embedded mouse kidney using SAA3 antibody at dilution of



1:150 (40x lens).

Immunofluorescence - SAA3 Polyclonal Antibody

Immunofluorescence analysis of U2OS cells using SAA3 antibody at dilution of 1:100. Blue: DAPI for nuclear staining.