

SOD1 antibody

Catalog Number: 115492

Product name

SOD1 antibody

Specificity

Human, Mouse, Rat; other species not tested.

Antibody description

SOD1 Rabbit Polyclonal antibody. Positive IF detected in HEK-293 cells. Positive IHC detected in human liver tissue, human brain tissue, human heart tissue, human kidney tissue, human lung tissue, human ovary tissue, human placenta tissue, human skin tissue, human spleen tissue, human testis tissue. Positive WB detected in HEK-293 cells, HeLa cells, human placenta tissue, mouse brain tissue, mouse liver tissue, rat brain tissue. Positive IP detected in HEK-293 cells. Observed molecular weight by Western-blot: 16-18 kDa

Preparation

This antibody was obtained by immunization of SOD1 recombinant protein (Accession Number: NM_000454). Purification method: Antigen affinity purified.

Formulation

PBS with 0.1% sodium azide and 50% glycerol pH 7.3.

Storage

Store at -20°C. DO NOT ALIQUOT

Clonality

Polyclonal

Ig Type

Rabbit IgG

Applications

ELISA, WB, IHC, IP, IF

Dilutions

Recommended Dilution:

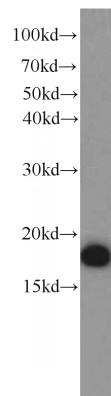
WB: 1:500-1:5000

IP: 1:500-1:5000

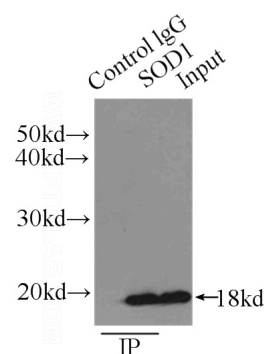
IHC: 1:20-1:200

IF: 1:10-1:100

Validations



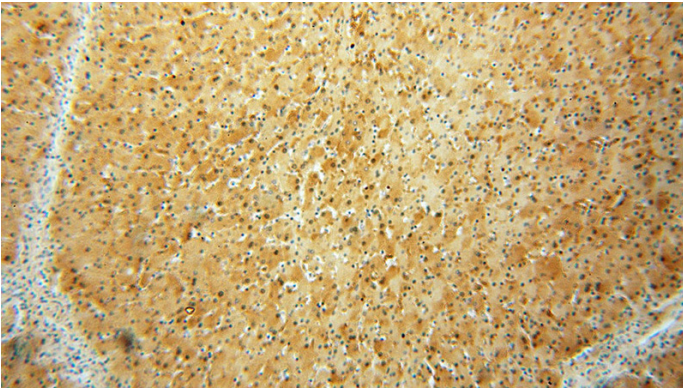
HEK-293 cells were subjected to SDS PAGE followed by western blot with Catalog No:115492(SOD1 antibody) at dilution of 1:1500



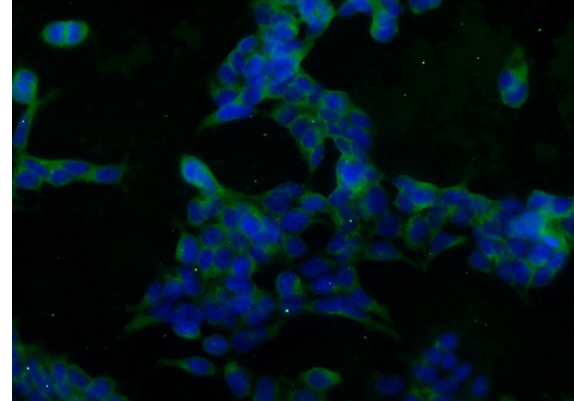
IP Result of anti-SOD1 (IP:Catalog No:115492, 3ug; Detection:Catalog No:115492 1:1500) with HEK-293 cells lysate 1000ug.

SOD1 antibody

Catalog Number: 115492



Immunohistochemical of paraffin-embedded human liver using Catalog No:115492(SOD1 antibody) at dilution of 1:100 (under 40x lens)



Immunofluorescent analysis of HEK-293 cells using Catalog No:115492(SOD1 Antibody) at dilution of 1:25 and Alexa Fluor 488-conjugated AffiniPure Goat Anti-Rabbit IgG(H+L)

Immunohistochemical of paraffin-embedded human liver using Catalog No:115492(SOD1 antibody) at dilution of 1:100 (under 10x lens)

