

IRF1 Polyclonal Antibody

Catalog Number: 165492

Product name

IRF1 Polyclonal Antibody

Specificity

Human, Mouse

Antibody description

Polyclonal antibody to IRF1

Preparation

Antigen: A synthetic peptide of human IRF1

Formulation

PBS with 0.02% sodium azide, 50% glycerol, pH7.3.

Storage

Store at -20°C. Avoid freeze / thaw cycles.

Clonality

Polyclonal

Ig Type

Rabbit IgG

Applications

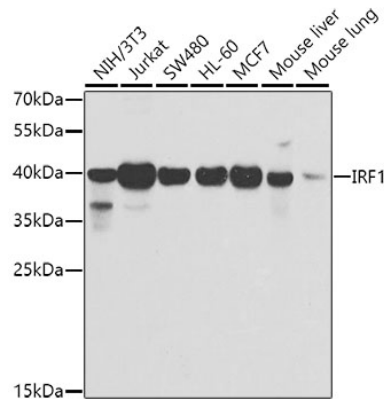
WB, IHC

Dilutions

WB 1:500 - 1:2000

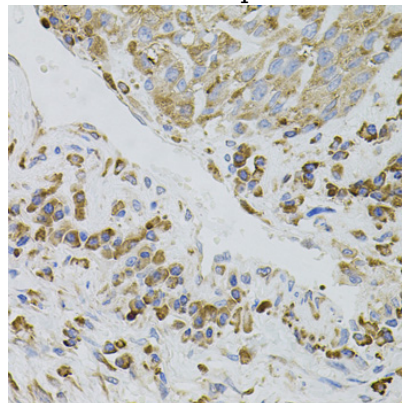
IHC 1:50 - 1:100

Validations



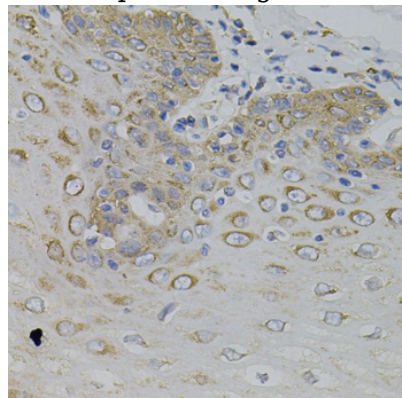
Western blot - IRF1 Polyclonal Antibody

Western blot analysis of extracts of various cell lines, using IRF1 antibody at 1:500 dilution. Secondary antibody: HRP Goat Anti-Rabbit IgG (H+L) at 1:10000 dilution. Lysates/proteins: 25ug per lane. Blocking buffer: 3% nonfat dry milk in TBST. Detection: ECL Enhanced Kit. Exposure time: 90s.



Immunohistochemistry - IRF1 Polyclonal Antibody

Immunohistochemistry of paraffin-embedded mouse spleen using IRF1 antibody (40x lens).



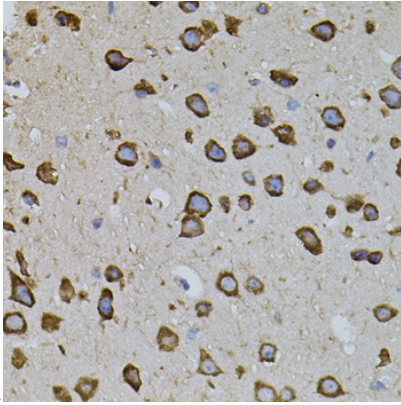
IRF1 Polyclonal Antibody



Catalog Number: 165492

Immunohistochemistry - IRF1 Polyclonal Antibody

Immunohistochemistry of paraffin-embedded human lung cancer using IRF1 antibody (40x



lens).

Immunohistochemistry - IRF1 Polyclonal Antibody

Immunohistochemistry of paraffin-embedded human esophagus using IRF1 antibody (40x lens).