

PAI-1 antibody

Catalog Number: 113492

Product name

PAI-1 antibody

WB: 1:200-1:2000

IP: 1:200-1:1000

Specificity

Human, Mouse, Rat; other species not tested.

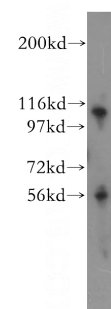
IHC: 1:20-1:200

IF: 1:50-1:500

Antibody description

PAI-1 Rabbit Polyclonal antibody. Positive IHC detected in human pancreas cancer tissue. Positive IF detected in SH-SY5Y cells. Positive IP detected in SH-SY5Y cells. Positive WB detected in SH-SY5Y cells, human vein tissue. Observed molecular weight by Western-blot: 50-55 kDa and 110 kDa

Validations



Preparation

This antibody was obtained by immunization of PAI-1 recombinant protein (Accession Number: NM_000602). Purification method: Antigen affinity purified.

SH-SY5Y cells were subjected to SDS PAGE followed by western blot with Catalog No:113492(SERPINE1 antibody) at dilution of 1:500

Formulation

PBS with 0.02% sodium azide and 50% glycerol pH 7.3.

Storage

Store at -20°C. DO NOT ALIQUOT

Clonality

Polyclonal

Ig Type

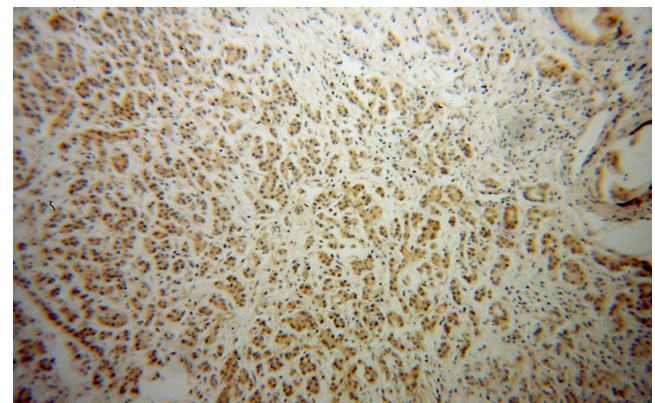
Rabbit IgG

Applications

ELISA, IHC, WB, IP, IF

Dilutions

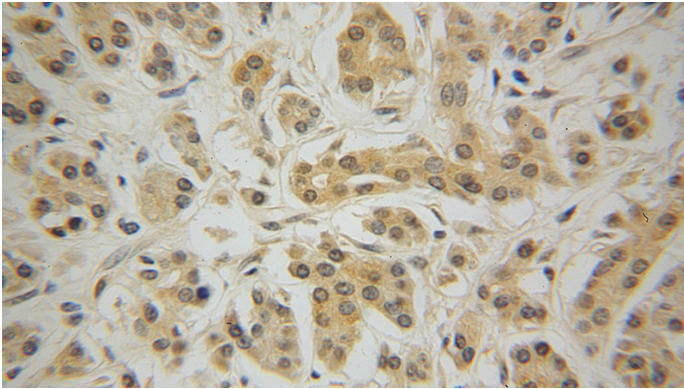
Recommended Dilution:



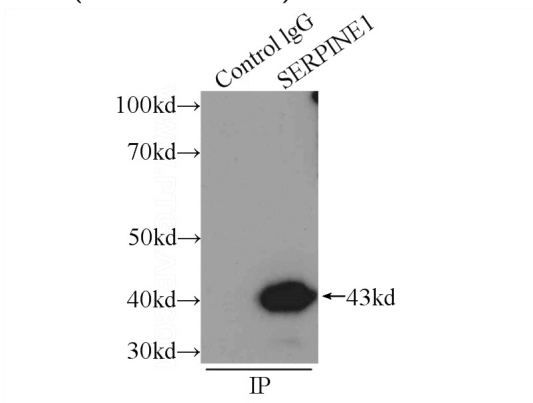
Immunohistochemical of paraffin-embedded human pancreas cancer using Catalog No:113492(SERPINE1 antibody) at dilution of 1:50 (under 10x lens)

PAI-1 antibody

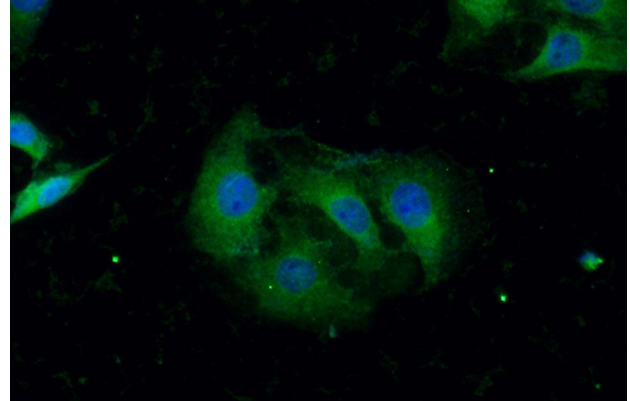
Catalog Number: 113492



Immunohistochemical of paraffin-embedded human pancreas cancer using Catalog No:113492(SERPINE1 antibody) at dilution of 1:50 (under 40x lens)



IP Result of anti-SERPINE1 (IP:Catalog No:113492, 3ug; Detection:Catalog No:113492 1:300) with SH-SY5Y cells lysate 2000ug.



Immunofluorescent analysis of (-20oc Ethanol) fixed SH-SY5Y cells using Catalog No:113492(SERPINE1 Antibody) at dilution of 1:50 and Alexa Fluor 488-conjugated AffiniPure Goat Anti-Rabbit IgG(H+L)