

MAT1A antibody



Catalog Number: 112492

Product name

MAT1A antibody

Immunogen

[Human MAT1A Recombinant protein \(GST tag\)](#)

Specificity

Human, Mouse, Rat; other species not tested.

Antibody description

MAT1A Rabbit Polyclonal antibody. Positive WB detected in mouse liver tissue, arabidopsis whole plant, HepG2 cells. Positive IHC detected in human lung tissue. Observed molecular weight by Western-blot: 44-55kd

Preparation

This antibody was obtained by immunization of MAT1A recombinant protein (Accession Number: XM_005269842). Purification method: Antigen affinity purified.

Formulation

PBS with 0.1% sodium azide and 50% glycerol pH 7.3.

Storage

Store at -20°C. DO NOT ALIQUOT

Clonality

Polyclonal

Ig Type

Rabbit IgG

Applications

ELISA, WB, IHC

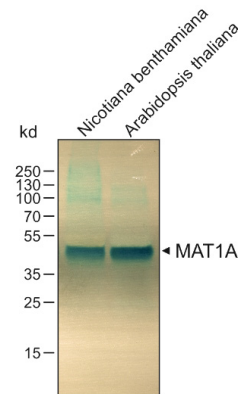
Dilutions

Recommended Dilution:

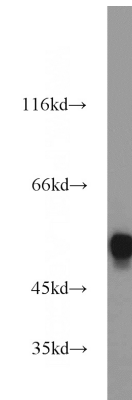
WB: 1:1000-1:10000

IHC: 1:20-1:200

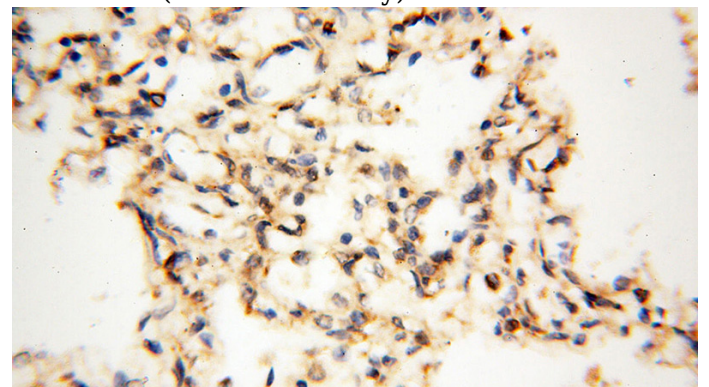
Validations



WB result of MAT1A antibody (Catalog No:112492, 1:5000) with plant leaf tissue samples.



mouse liver tissue were subjected to SDS PAGE followed by western blot with Catalog No:112492(MAT1A antibody) at dilution of 1:1000



Immunohistochemical of paraffin-embedded

MAT1A antibody



Catalog Number: 112492

human lung using Catalog No:112492(MAT1A

antibody) at dilution of 1:200 (under 40x lens)