

# EVI2A antibody

Catalog Number: 110492

## Product name

EVI2A antibody

IHC: 1:20-1:200

IF: 1:10-1:100

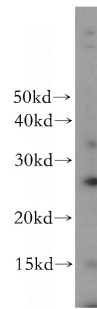
## Specificity

Human; other species not tested.

## Antibody description

EVI2A Rabbit Polyclonal antibody. Positive IF detected in HepG2 cells. Positive IHC detected in human brain tissue. Positive WB detected in human brain tissue. Observed molecular weight by Western-blot: 26 kDa

## Validations



## Preparation

This antibody was obtained by immunization of EVI2A recombinant protein (Accession Number: NM\_014210). Purification method: Antigen affinity purified.

human brain tissue were subjected to SDS PAGE followed by western blot with Catalog No:110492(EVI2A antibody) at dilution of 1:300

## Formulation

PBS with 0.02% sodium azide and 50% glycerol pH 7.3.

## Storage

Store at -20°C. DO NOT ALIQUOT

## Clonality

Polyclonal

## Ig Type

Rabbit IgG

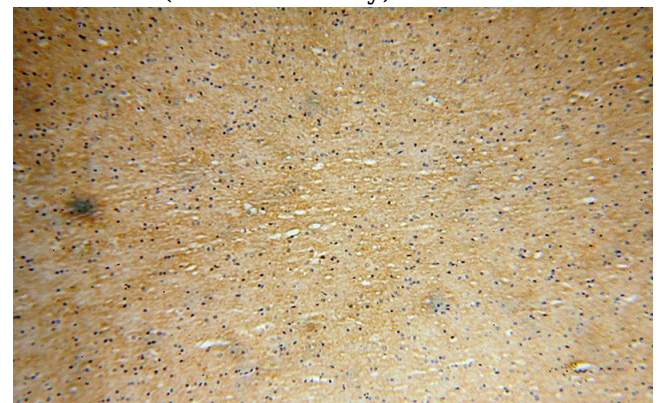
## Applications

ELISA, WB, IHC, IF

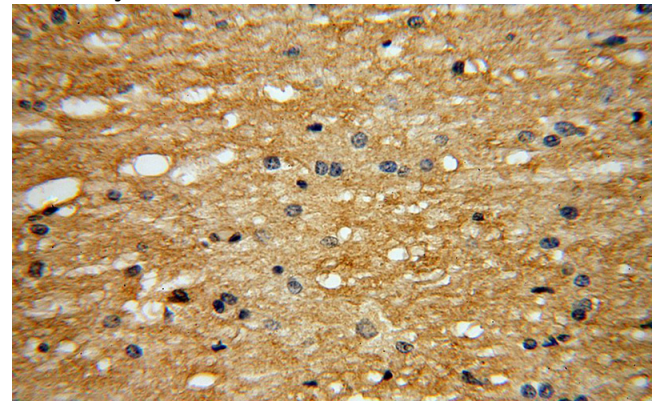
## Dilutions

Recommended Dilution:

WB: 1:500-1:5000



Immunohistochemical of paraffin-embedded human brain using Catalog No:110492(EVI2A antibody) at dilution of 1:100 (under 10x lens)



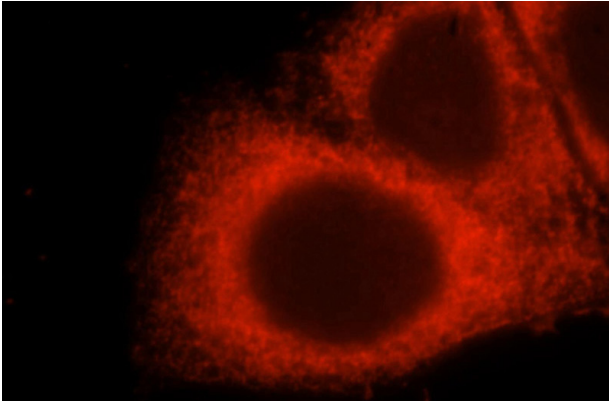
Immunohistochemical of paraffin-embedded human brain using Catalog No:110492(EVI2A

# EVI2A antibody

Catalog Number: 110492

---

antibody) at dilution of 1:100 (under 40x lens)



Immunofluorescent analysis of HepG2 cells, using EVI2A antibody Catalog No:110492 at 1:25 dilution and Rhodamine-labeled goat anti-rabbit IgG (red).