

Anti-PKC mu/PKD Rabbit antibody



Catalog Number: 167092

Product name

Anti-PKC mu/PKD Rabbit antibody

Specificity

Human, Mouse, Rat

Antibody description

PKC mu/PKD Rabbit polyclonal antibody

Preparation

Antigen: A synthetic peptide of human PKC mu

Formulation

Supplied in 50nM Tris-Glycine(pH 7.4), 0.15M NaCl, 40%Glycerol, 0.01% sodium azide and 0.05% BSA.

Storage

Store at -20°C. Stable for 12 months from date of receipt.

Clonality

Polyclonal

Ig Type

Rabbit IgG

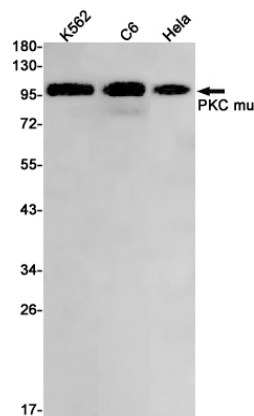
Applications

WB

Dilutions

WB: 1/1000

Validations



Western blot detection of PKC mu in K562,C6,HeLa cell lysates using PKC mu Rabbit pAb(1:1000 diluted).Predicted band size:102kDa.Observed band size:102kDa.