

Anti-Menin Rabbit antibody



Catalog Number: 168782

Product name

Anti-Menin Rabbit antibody

Specificity

Human

Antibody description

Menin Rabbit monoclonal antibody

Preparation

Antigen: A synthetic peptide of human Menin

Formulation

Supplied in 50nM Tris-Glycine(pH 7.4), 0.15M NaCl, 40%Glycerol, 0.01% sodium azide and 0.05% BSA.

Storage

Store at 4°C short term. Aliquot and store at -20°C long term. Avoid freeze / thaw cycle.

Clonality

Monoclonal

Ig Type

Rabbit IgG

Applications

WB, ICC/IF, IP

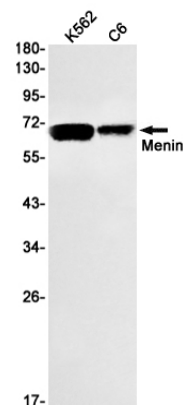
Dilutions

WB: 1/2000-1/10000

ICC/IF: 1/50-1/200

IP: 1/20-1/50

Validations



Western blot detection of Menin in K562,C6 cell lysates using Menin Rabbit mAb(1:1000 diluted).Predicted band size:68kDa.Observed band size:68kDa.