

ROGDI antibody



Catalog Number: 114782

Product name

ROGDI antibody

Immunogen

[Human ROGDI Recombinant protein \(GST tag\)](#)

Specificity

Human, Mouse; other species not tested.

Antibody description

ROGDI Rabbit Polyclonal antibody. Positive IHC detected in human kidney tissue, human placenta tissue, human spleen tissue. Positive IP detected in mouse brain tissue. Positive WB detected in human brain tissue, human kidney tissue, mouse brain tissue. Observed molecular weight by Western-blot: 32kd

Preparation

This antibody was obtained by immunization of ROGDI recombinant protein (Accession Number: NM_024589). Purification method: Antigen affinity purified.

Formulation

PBS with 0.02% sodium azide and 50% glycerol pH 7.3.

Storage

Store at -20°C. DO NOT ALIQUOT

Clonality

Polyclonal

Ig Type

Rabbit IgG

Applications

ELISA, WB, IHC, IP

Dilutions

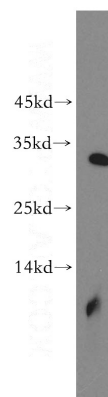
Recommended Dilution:

WB: 1:500-1:5000

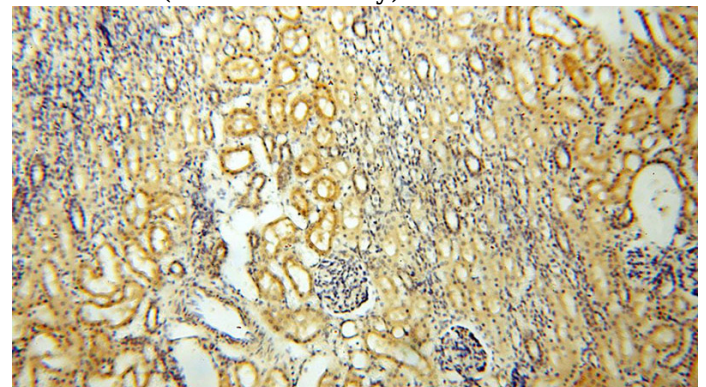
IP: 1:200-1:2000

IHC: 1:20-1:200

Validations



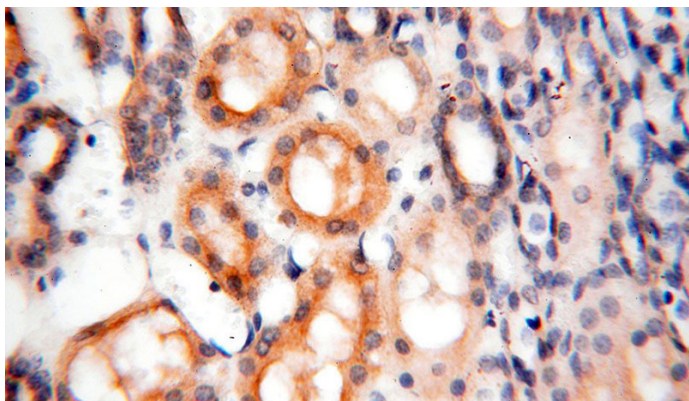
human brain tissue were subjected to SDS PAGE followed by western blot with Catalog No:114782(ROGDI antibody) at dilution of 1:500



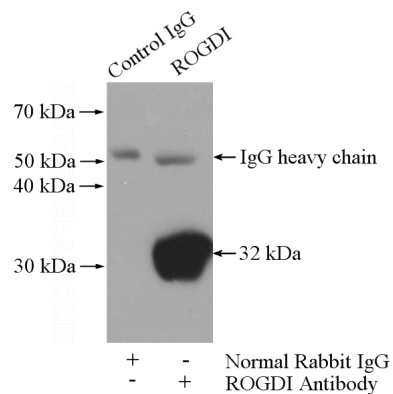
Immunohistochemical of paraffin-embedded human kidney using Catalog No:114782(ROGDI antibody) at dilution of 1:100 (under 10x lens)

ROGDI antibody

Catalog Number: 114782



Immunohistochemical of paraffin-embedded human kidney using Catalog No:114782(ROGDI antibody) at dilution of 1:100 (under 40x lens)



IP Result of anti-ROGDI (IP:Catalog No:114782, 4ug; Detection:Catalog No:114782 1:500) with mouse brain tissue lysate 4000ug.