

# PGCP antibody

Catalog Number: 113782

## Product name

PGCP antibody

IP: 1:200-1:2000

IF: 1:20-1:200

## Specificity

Human, Mouse; other species not tested.

## Antibody description

PGCP Rabbit Polyclonal antibody. Positive IF detected in L02 cells. Positive WB detected in L02 cells, human placenta tissue, human serum tissue, mouse kidney tissue. Positive IP detected in mouse kidney tissue. Observed molecular weight by Western-blot: 65-70 kDa

## Preparation

This antibody was obtained by immunization of PGCP recombinant protein (Accession Number: NM\_016134). Purification method: Antigen affinity purified.

## Formulation

PBS with 0.02% sodium azide and 50% glycerol pH 7.3.

## Storage

Store at -20°C. DO NOT ALIQUOT

## Clonality

Polyclonal

## Ig Type

Rabbit IgG

## Applications

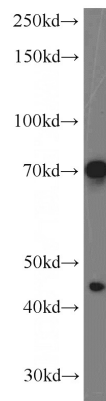
ELISA, WB, IF, IP

## Dilutions

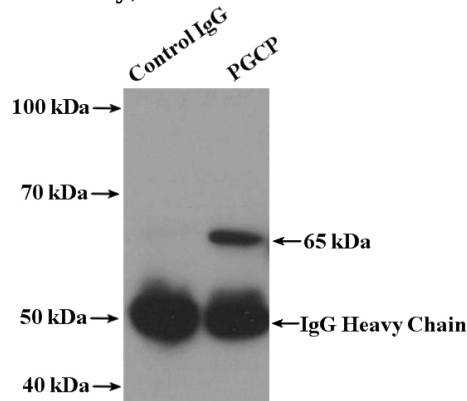
Recommended Dilution:

WB: 1:200-1:2000

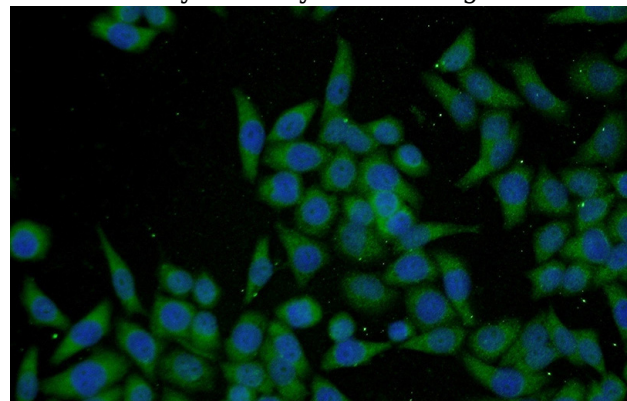
## Validations



L02 cells were subjected to SDS PAGE followed by western blot with Catalog No:113782(PGCP antibody) at dilution of 1:600



IP Result of anti-PGCP (IP:Catalog No:113782, 4ug; Detection:Catalog No:113782 1:500) with mouse kidney tissue lysate 4000ug.



Immunofluorescent analysis of L02 cells using Catalog No:113782(PGCP Antibody) at dilution of

# PGCP antibody



Catalog Number: 113782

---

1:50 and Alexa Fluor 488-conjugated AffiniPure

Goat Anti-Rabbit IgG(H+L)