

# Anti-Cardiac Troponin I (4D3) Mouse antibody



Catalog Number: 168382

## Product name

ELISA: 1/10000

Anti-Cardiac Troponin I (4D3) Mouse antibody

;WB: 1/1000

## Specificity

Human, Mouse, Rat

## Antibody description

Cardiac Troponin I (4D3) Mouse monoclonal antibody

## Preparation

Antigen: Synthetic peptides corresponding to the sequence of human Cardiac Troponin I.

## Formulation

PBS(pH 7.4) containing with 0.03% Proclin300.

## Storage

Store at 4°C short term. Avoid freeze / thaw cycle.

## Clonality

Monoclonal

## Ig Type

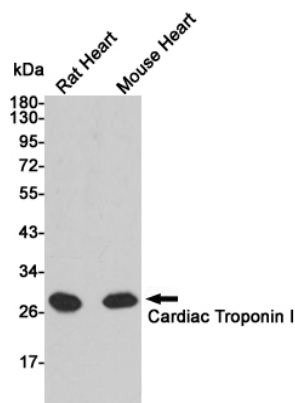
Mouse IgG2a

## Applications

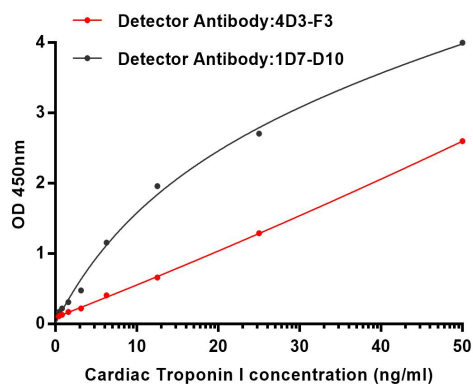
WB, ELISA

## Dilutions

## Validations



Western blot analysis of extracts from Rat and mouse heart tissue using Troponin I (168382, dilution 1:1000) Mouse mAb. Predicted band size: 28kDa. Observed band size: 28kDa.



sELISA standard Curve for Cardiac Troponin I: Capture Antibody Mouse mAb to Cardiac Troponin I at 2ug/ml and 168382(4D3-F3) was used for detecting.