

# Anti-STAT1 Rabbit antibody



Catalog Number: 167382

## Product name

Anti-STAT1 Rabbit antibody

WB: 1/1000

IHC: 1/1000

## Specificity

Human, Mouse, Rat

FC: 1/100

IP: 1/20

## Antibody description

STAT1 Rabbit polyclonal antibody

## Validations

## Preparation

Antigen: Recombinant protein of human STAT1

## Formulation

Supplied in 50nM Tris-Glycine(pH 7.4), 0.15M NaCl, 40%Glycerol, 0.01% sodium azide and 0.05% BSA.

## Storage

Store at -20°C. Stable for 12 months from date of receipt.

## Clonality

Polyclonal

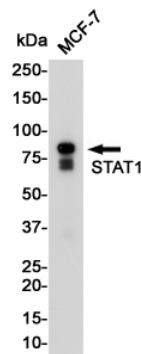
## Ig Type

Rabbit IgG

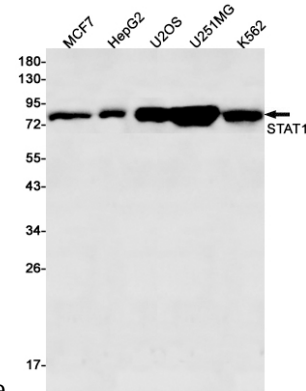
## Applications

WB, IHC-P, FC, IP

## Dilutions



Western blot detection of STAT1 in MCF-7 cell lysates using STAT1 Rabbit pAb(1:1000 diluted). Predicted band size:87KDa. Observed



band size:87KDa.

Western blot detection of STAT1 in MCF7, HepG2, U2OS, U251MG, K562 cell lysates using STAT1 Rabbit pAb(1:500 diluted). Predicted band size:87kDa. Observed band size:87kDa.