

Phospho-ABL1-Y393/ABL2-Y429 pAb



Catalog Number: 166382

Product name

Phospho-ABL1-Y393/ABL2-Y429 pAb

Specificity

Human, Mouse

Antibody description

Polyclonal antibody to Phospho-ABL1-Y393/ABL2-Y429

Preparation

Antigen: A phospho specific peptide corresponding to residues surrounding Y393/429 of human ABL1/2

Formulation

PBS with 0.02% sodium azide, 50% glycerol, pH7.3.

Storage

Store at -20°C. Avoid freeze / thaw cycles.

Clonality

Polyclonal

Ig Type

Rabbit IgG

Applications

WB, IHC, IF

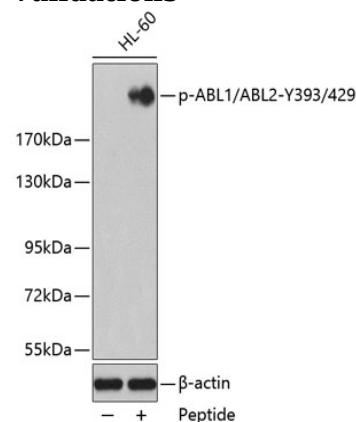
Dilutions

WB 1:500 - 1:1000

IHC 1:50 - 1:100

IF 1:100 - 1:200

Validations



Western blot - Phospho-ABL1-Y393/ABL2-Y429 pAb

Western blot analysis of extracts from HL60 cells using phospho-ABL1/2-Y393/429 antibody and the same antibody preincubated with blocking peptide. Secondary antibody: HRP Goat Anti-Rabbit IgG (H+L) at 1:10000 dilution. Lysates/proteins: 25ug per lane. Blocking buffer: 3% BSA.