

## General Information

### Gene Name Synonym

B-cell surface antigen CD40; CD40L receptor

### Protein Construction

A DNA sequence encoding the canine CD40 (Q7YRL5) (Met1-Ala194) was expressed with six amino acids (LEVLFQ) at the C-terminus.

### Organism

Canine

### Expression Host

Human Cells

## QC Testing

### Purity

> 95 % as determined by SDS-PAGE

### Endotoxin

< 1.0 EU per  $\mu\text{g}$  of the protein as determined by the LAL method

### Stability

Samples are stable for up to twelve months from date of receipt at  $-70^{\circ}\text{C}$

### Predicted N terminal

Glu 21

### Molecular Mass

The recombinant canine CD40 is a disulfide-linked

homodimer. The reduced monomer comprises 181 amino acids and has a predicted molecular mass of 19.9 kDa. The apparent molecular mass of the protein is approximately 28-32 kDa in SDS-PAGE under reducing conditions.

### Formulation

Lyophilized from sterile PBS, pH 7.4.

1. 5 % trehalose and mannitol are added as protectants before lyophilization.

2. Please contact us for any concerns or special requirements.

## Usage Guide

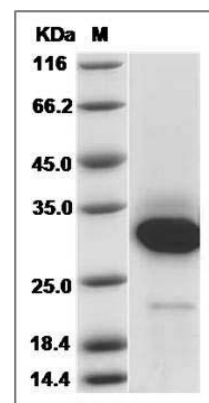
### Storage

Store it under sterile conditions at  $-20^{\circ}\text{C}$  to  $-80^{\circ}\text{C}$ . It is recommended that the protein be aliquoted for optimal storage. Avoid repeated freeze-thaw cycles.

### Reconstitution

Adding sterile water, prepare a stock solution of 0.25 mg/ml. Concentration is measured by UV-Vis.

### SDS-PAGE



Canine CD40 / TNFRSF5 Protein SDS-PAGE