

CYP19A1 antibody



Catalog Number: 109682

Product name

CYP19A1 antibody

Specificity

Human, Mouse; other species not tested.

Antibody description

CYP19A1 Rabbit Polyclonal antibody. Positive IHC detected in human placenta tissue, human kidney tissue, human lung tissue, human ovary tissue, human skeletal muscle tissue, human spleen tissue, human testis tissue. Positive WB detected in A2780 cells, human testis tissue, mouse ovary tissue. Observed molecular weight by Western-blot: 49-55 kDa

Preparation

This antibody was obtained by immunization of CYP19A1 recombinant protein (Accession Number: BC022896). Purification method: Antigen affinity purified.

Formulation

PBS with 0.02% sodium azide and 50% glycerol pH 7.3.

Storage

Store at -20°C. DO NOT ALIQUOT

Clonality

Polyclonal

Ig Type

Rabbit IgG

Applications

ELISA, WB, IHC

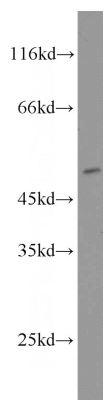
Dilutions

Recommended Dilution:

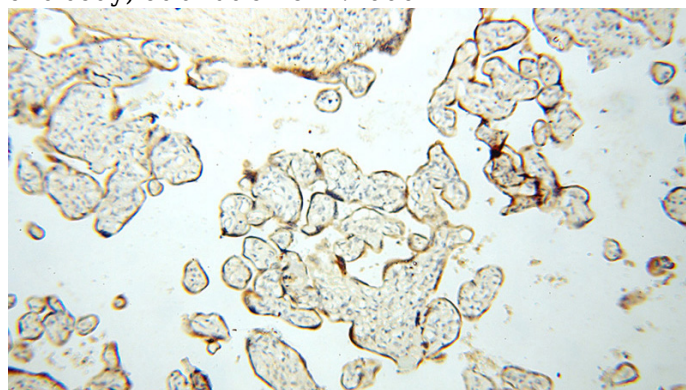
WB: 1:200-1:2000

IHC: 1:20-1:200

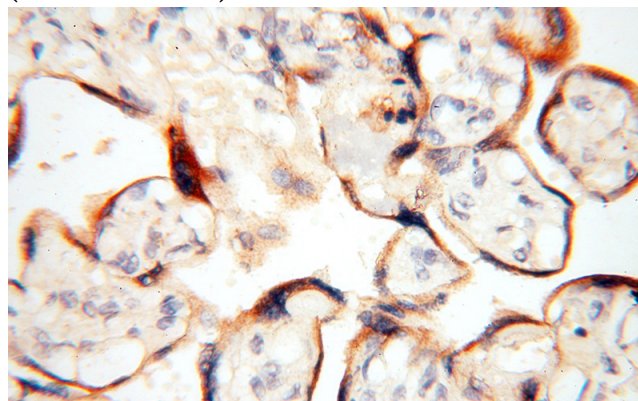
Validations



A2780 cells were subjected to SDS PAGE followed by western blot with Catalog No:109682(CYP19A1 antibody) at dilution of 1:1000



Immunohistochemical of paraffin-embedded human placenta using Catalog No:109682(CYP19A1 antibody) at dilution of 1:50 (under 10x lens)



CYP19A1 antibody



Catalog Number: 109682

Immunohistochemical of paraffin-embedded human placenta using Catalog

No:109682(CYP19A1 antibody) at dilution of 1:50 (under 40x lens)