

# Anti-Glutathione Reductase Rabbit antibody



Catalog Number: 168682

## Product name

Rabbit IgG

Anti-Glutathione Reductase Rabbit antibody

## Applications

## Specificity

WB, ICC/IF, FC, IP

Human

## Dilutions

## Antibody description

WB: 1/2000-1/10000

Glutathione Reductase Rabbit monoclonal antibody

ICC/IF: 1/50

FC: 1/20-1/100

## Preparation

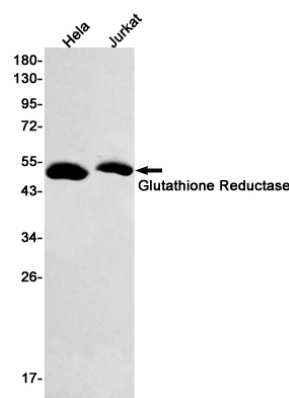
IP: 1/20

Antigen: A synthetic peptide of human Glutathione Reductase

## Validations

## Formulation

50nM Tris-Glycine(pH 7.4), 0.15M NaCl, 40%Glycerol, 0.01% sodium azide and 0.05% BSA.



## Storage

Store at 4°C short term. Store at -20°C long term. Avoid freeze / thaw cycle.

## Clonality

Monoclonal

Western blot detection of Glutathione Reductase in HeLa, Jurkat cell lysates using Glutathione Reductase Rabbit mAb(1:500 diluted). Predicted band size: 56kDa. Observed band size: 51kDa.

## Ig Type