

# Anti-APOBEC2 antibody



Catalog Number: 106682

## Product name

Anti-APOBEC2 antibody

## Specificity

Human APOBEC2

## Antibody description

Rabbit polyclonal to APOBEC2

## Preparation

Produced in rabbits immunized with a synthetic peptide corresponding to the N-terminus of the human APOBEC2, and purified by antigen affinity chromatography.

## Formulation

0.2  $\mu$ m filtered solution in PBS

## Storage

This antibody can be stored at 2°C-8°C for one month without detectable loss of activity. Antibody products are stable for twelve months from date of receipt when stored at -20°C to -80°C.

Preservative-Free.

Sodium azide is recommended to avoid contamination (final concentration 0.05%-0.1%). It is toxic to cells and should be disposed of properly. Avoid repeated freeze-thaw cycles.

## Clonality

Polyclonal

## Ig Type

Rabbit IgG

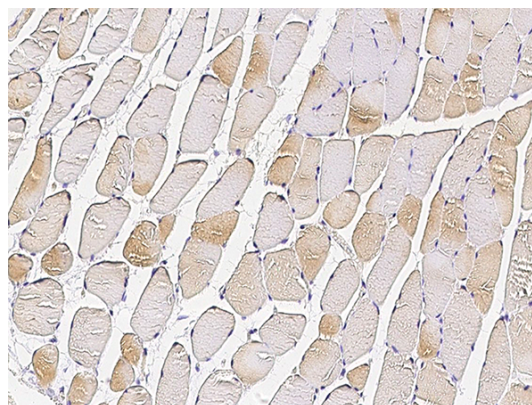
## Applications

IHC-P

## Dilutions

IHC-P: 0.1-2  $\mu$ g/mL

## Validations



APOBEC2 Antibody, Rabbit PAb, Antigen Affinity Purified, Immunohistochemistry

Immunochemical staining of human APOBEC2 in human skeletal muscle with rabbit polyclonal antibody (1  $\mu$ g/mL, formalin-fixed paraffin embedded sections).