

Anti-Integrin beta 1 Rabbit antibody



Catalog Number: 166682

Product name

Anti-Integrin beta 1 Rabbit antibody

Specificity

Human

Antibody description

Integrin beta 1 Rabbit polyclonal antibody

Preparation

Antigen: A synthesized peptide derived from human Integrin beta 1

Formulation

Rabbit IgG in phosphate buffered saline , pH 7.4, 150mM NaCl, 0.02% sodium azide and 50% glycerol.

Storage

Store at 4°C short term. Store at -20°C long term. Avoid freeze / thaw cycle.

Clonality

Polyclonal

Ig Type

Rabbit IgG

Applications

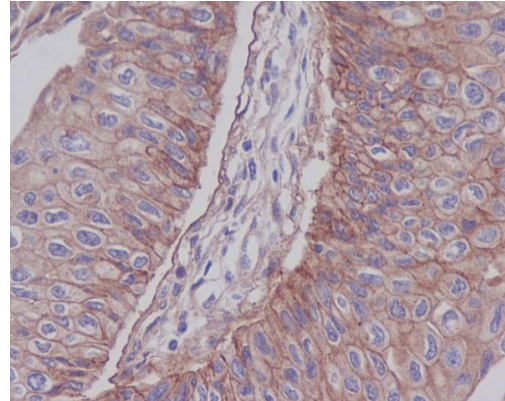
WB, IHC-P

Dilutions

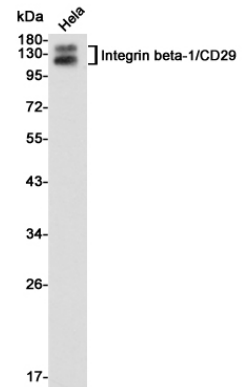
WB: 1/500-1/2000

IHC: 1/50-1/200

Validations

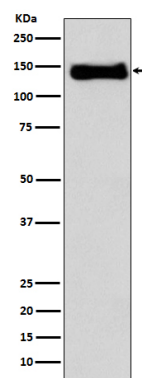


Immunohistochemical analysis of paraffin-embedded human bladder carcinoma, using



Integrin beta 1 Antibody.

Western blot analysis of Integrin beta-1/CD29 expression in HeLa cell lysates using Integrin beta-1/CD29 antibody at 1/1000 dilution. Predicted band size: 88KDa. Observed band size: 115, 135KDa.



Western blot analysis of using Integrin beta1 expression in U937 cell lysate.