

General Information

Protein Construction

A DNA sequence encoding the HIV-1 envelope glycoprotein gp160 extracellular domain (Val30-Tyr677), termed as gp140, was fused with the bacteriophage T4 fibritin and a polyhistidine tag at the C-terminus.

Organism

HIV

Expression Host

Human Cells

QC Testing

Activity

Measured by its ability to biotinylated human CD4-his (Cat:501408) in functional Elisa.

Purity

> 94 % as determined by SDS-PAGE

Endotoxin

< 1.0 EU per μg of the protein as determined by the LAL method

Stability

Samples are stable for up to twelve months from date of receipt at -70°C

Predicted N terminal

Val 30

Molecular Mass

The recombinant HIV-1 gp140 consists of 694 amino acids after removal of the signal peptide and has a predicted molecular mass of 78.2 kDa. The apparent molecular mass of the recombinant protein is approximately 119 KDa in SDS-PAGE under reducing conditions.

Formulation

Lyophilized from sterile PBS, pH 7.4

1. 5 % trehalose and mannitol are added as protectants before lyophilization.

2. Please contact us for any concerns or special requirements.

Usage Guide

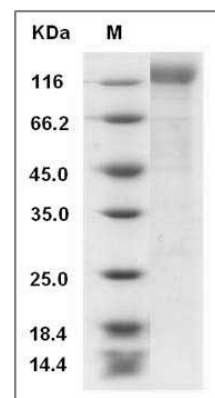
Storage

Store it under sterile conditions at -20°C to -80°C . It is recommended that the protein be aliquoted for optimal storage. Avoid repeated freeze-thaw cycles.

Reconstitution

Adding sterile water, prepare a stock solution of 0.25 mg/ml. Concentration is measured by UV-Vis.

SDS-PAGE



Human Immunodeficiency Virus type 1 (HIV-1) gp140 Protein (His Tag) SDS-PAGE