

# ATF1 antibody



Catalog Number: 108282

## Product name

ATF1 antibody

IP: 1:200-1:2000

IF: 1:50-1:500

## Specificity

Human, Mouse, Rat; other species not tested.

## Antibody description

ATF1 Rabbit Polyclonal antibody. Positive WB detected in HeLa cells, A431 cells, human brain tissue. Positive IP detected in HeLa cells. Positive IF detected in HeLa cells. Observed molecular weight by Western-blot: 35 kDa

## Preparation

This antibody was obtained by immunization of ATF1 recombinant protein (Accession Number: XM\_011538386). Purification method: Antigen affinity purified.

## Formulation

PBS with 0.02% sodium azide and 50% glycerol pH 7.3.

## Storage

Store at -20°C. DO NOT ALIQUOT

## Clonality

Polyclonal

## Ig Type

Rabbit IgG

## Applications

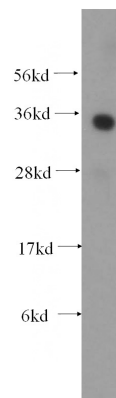
ELISA, WB, IP, IF

## Dilutions

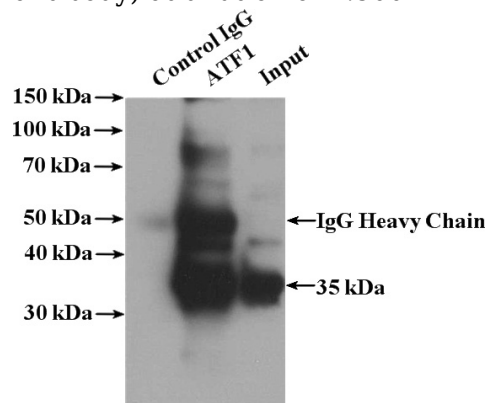
Recommended Dilution:

WB: 1:200-1:2000

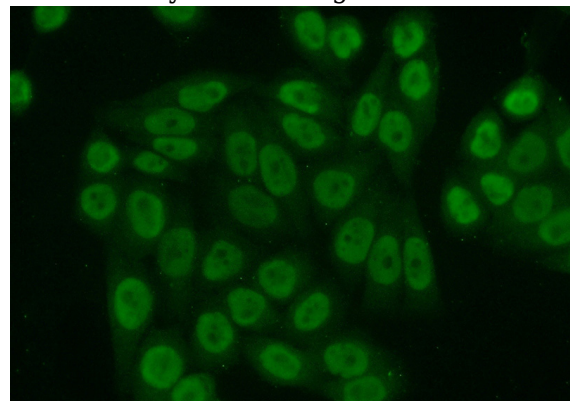
## Validations



HeLa cells were subjected to SDS PAGE followed by western blot with Catalog No:108282(ATF1 antibody) at dilution of 1:500



IP Result of anti-ATF1 (IP:Catalog No:108282, 4ug; Detection:Catalog No:108282 1:500) with HeLa cells lysate 3200ug.



Immunofluorescent analysis of (10% Formaldehyde) fixed HeLa cells using Catalog

# ATF1 antibody



Catalog Number: 108282

---

No:108282(ATF1 Antibody) at dilution of 1:50 and Alexa Fluor 488-conjugated AffiniPure Goat Anti-Rabbit IgG(H+L)