

SLC2A13 Polyclonal Antibody



Catalog Number: 166282

Product name

SLC2A13 Polyclonal Antibody

Specificity

Human, Mouse, Rat

Antibody description

Polyclonal antibody to SLC2A13

Preparation

Antigen: Recombinant fusion protein containing a sequence corresponding to amino acids 564-648 of human SLC2A13 (NP_443117.3).

Formulation

PBS with 0.02% sodium azide, 50% glycerol, pH7.3.

Storage

Store at -20°C. Avoid freeze / thaw cycles.

Clonality

Polyclonal

Ig Type

Rabbit IgG

Applications

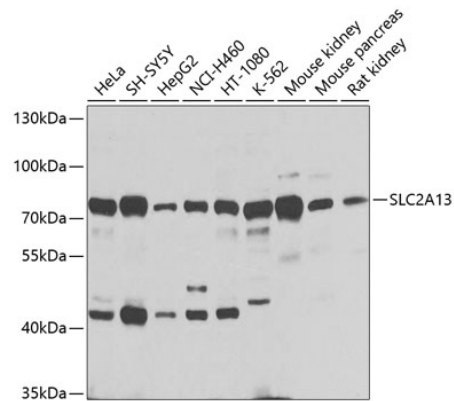
WB, IHC

Dilutions

WB 1:1000 - 1:4000

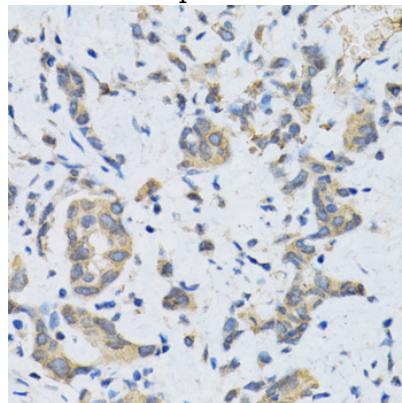
IHC 1:50 - 1:200

Validations



Western blot - SLC2A13 Polyclonal Antibody

Western blot analysis of extracts of various cell lines, using SLC2A13 antibody at 1:1000 dilution. Secondary antibody: HRP Goat Anti-Rabbit IgG (H+L) at 1:10000 dilution. Lysates/proteins: 25ug per lane. Blocking buffer: 3% nonfat dry milk in TBST. Detection: ECL Basic Kit. Exposure time: 1s.



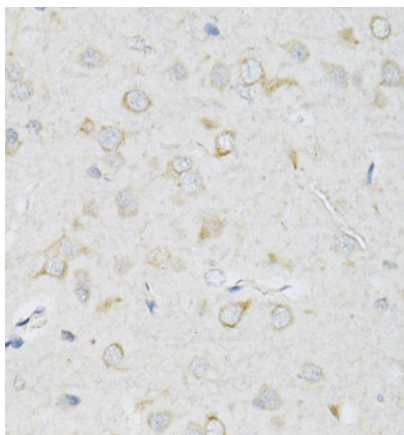
Immunohistochemistry - SLC2A13 Polyclonal Antibody

Immunohistochemistry of paraffin-embedded human gastric cancer using SLC2A13 antibody at dilution of 1:100 (40x lens).

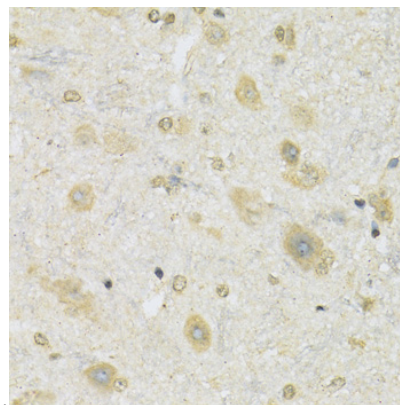
SLC2A13 Polyclonal Antibody



Catalog Number: 166282



(40x lens).



Immunohistochemistry - SLC2A13 Polyclonal Antibody

Immunohistochemistry of paraffin-embedded mouse spinal cord using SLC2A13 antibody at dilution of 1:100 (40x lens).

Immunohistochemistry - SLC2A13 Polyclonal Antibody

Immunohistochemistry of paraffin-embedded rat brain using SLC2A13 antibody at dilution of 1:100