

SHPRH antibody

Catalog Number: 115282

Product name

SHPRH antibody

Specificity

Human, Mouse; other species not tested.

Antibody description

SHPRH Rabbit Polyclonal antibody. Positive IP detected in mouse testis tissue. Positive WB detected in mouse testis tissue. Observed molecular weight by Western-blot: 200 kDa

Preparation

This antibody was obtained by immunization of SHPRH recombinant protein (Accession Number: XM_006715441). Purification method: Antigen affinity purified.

Formulation

PBS with 0.02% sodium azide and 50% glycerol pH 7.3.

Storage

Store at -20°C. DO NOT ALIQUOT

Clonality

Polyclonal

Ig Type

Rabbit IgG

Applications

ELISA, WB, IP

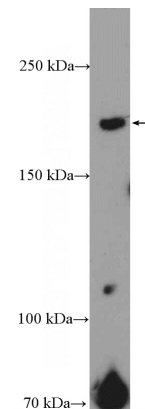
Dilutions

Recommended Dilution:

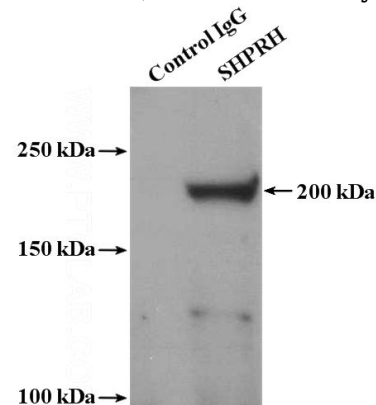
WB: 1:200-1:1000

IP: 1:200-1:1000

Validations



mouse testis tissue were subjected to SDS PAGE followed by western blot with Catalog No:115282(SHPRH Antibody) at dilution of 1:300



IP Result of anti-SHPRH (IP:Catalog No:115282, 4ug; Detection:Catalog No:115282 1:300) with mouse testis tissue lysate 4000ug.