

# PRTFDC1 antibody

Catalog Number: 114282

## Product name

PRTFDC1 antibody

IP: 1:200-1:2000

IHC: 1:20-1:200

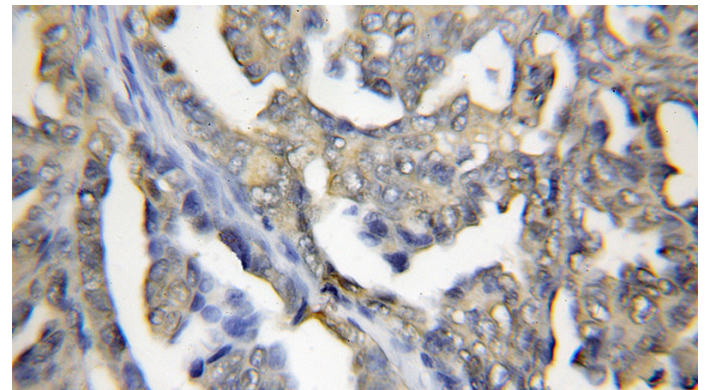
## Specificity

Human; other species not tested.

## Validations

## Antibody description

PRTFDC1 Rabbit Polyclonal antibody. Positive IHC detected in human ovary tumor tissue. Positive IP detected in mouse brain tissue. Positive WB detected in fetal human brain tissue, human brain tissue, Y79 cells. Observed molecular weight by Western-blot: 26 kDa



## Preparation

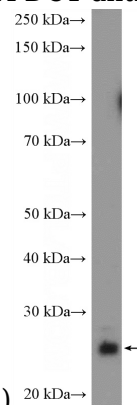
This antibody was obtained by immunization of PRTFDC1 recombinant protein (Accession Number: NM\_020200). Purification method: Antigen affinity purified.

Immunohistochemical of paraffin-embedded human ovary tumor using Catalog

No:114282(PRTFDC1 antibody) at dilution of 1:50

## Formulation

PBS with 0.1% sodium azide and 50% glycerol pH 7.3.



(under 10x lens)

## Storage

Store at -20°C. DO NOT ALIQUOT

fetal human brain tissue were subjected to SDS PAGE followed by western blot with Catalog No:114282(PRTFDC1 Antibody) at dilution of

## Clonality

Polyclonal

## Ig Type

Rabbit IgG

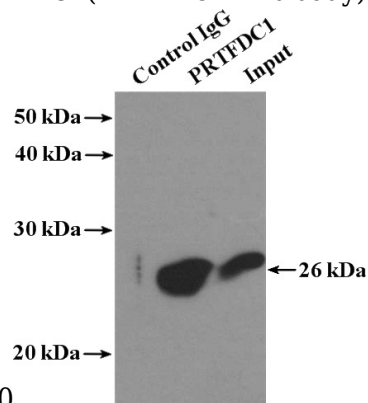
## Applications

ELISA, IHC, WB, IP

## Dilutions

Recommended Dilution:

WB: 1:200-1:2000



1:600

IP Result of anti-PRTFDC1 (IP:Catalog No:114282, 4ug; Detection:Catalog No:114282 1:600) with

# PRTFDC1 antibody



Catalog Number: 114282

---

mouse brain tissue lysate 4000ug.