

ARHGEF5 Polyclonal Antibody



Catalog Number: 164282

Product name

ARHGEF5 Polyclonal Antibody

Specificity

Human, Mouse, Rat

Antibody description

Polyclonal antibody to ARHGEF5

Preparation

Antigen: Recombinant fusion protein containing a sequence corresponding to amino acids 1248-1597 of human ARHGEF5 (NP_005426.2).

Formulation

PBS with 0.02% sodium azide, 50% glycerol, pH7.3.

Storage

Store at -20°C. Avoid freeze / thaw cycles.

Clonality

Polyclonal

Ig Type

Rabbit IgG

Applications

WB, IHC, IF

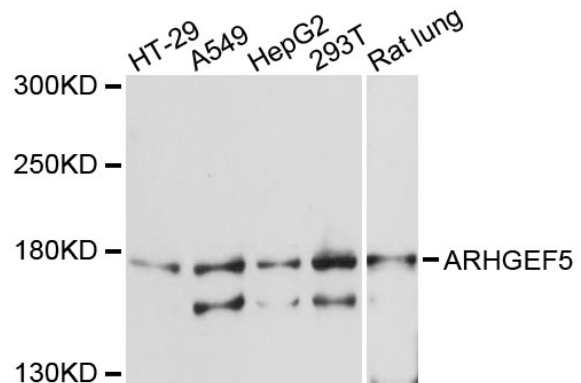
Dilutions

WB 1:500 - 1:2000

IHC 1:50 - 1:100

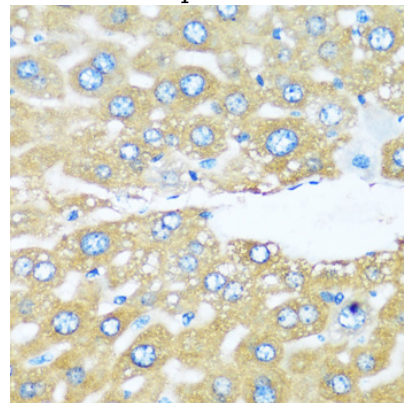
IF 1:50 - 1:200

Validations



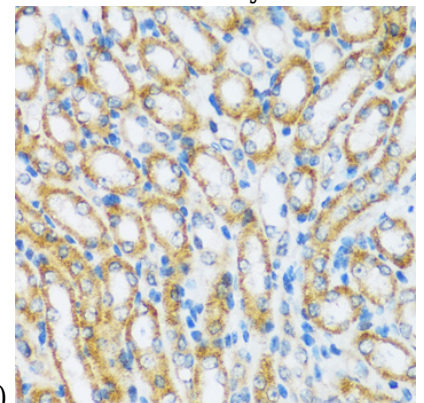
Western blot - ARHGEF5 Polyclonal Antibody

Western blot analysis of extracts of various cell lines, using ARHGEF5 antibody at 1:3000 dilution. Secondary antibody: HRP Goat Anti-Rabbit IgG (H+L) at 1:10000 dilution. Lysates/proteins: 25ug per lane. Blocking buffer: 3% nonfat dry milk in TBST. Detection: ECL Basic Kit. Exposure time: 90s.



Immunohistochemistry - ARHGEF5 Polyclonal Antibody

Immunohistochemistry of paraffin-embedded mouse liver using ARHGEF5 antibody at dilution



of 1:100 (40x lens).

ARHGEF5 Polyclonal Antibody



Catalog Number: 164282

Immunohistochemistry - ARHGEF5 Polyclonal Antibody

Immunohistochemistry of paraffin-embedded mouse kidney using ARHGEF5 antibody at dilution of 1:100 (40x lens).