

Anti-CAB39/MO25 Rabbit antibody



Catalog Number: 167982

Product name

Anti-CAB39/MO25 Rabbit antibody

Specificity

Human, Mouse, Rat

Antibody description

CAB39/MO25 Rabbit monoclonal antibody

Preparation

Antigen: A synthetic peptide of human CAB39/MO25

Formulation

50nM Tris-Glycine(pH 7.4), 0.15M NaCl, 40%Glycerol, 0.01% sodium azide and 0.05% BSA

Storage

Store at 4°C short term. Store at -20°C long term. Avoid freeze / thaw cycle.

Clonality

Monoclonal

Ig Type

Rabbit IgG

Applications

WB, IHC-P, ICC/IF, FC, IP

Dilutions

WB: 1/5000

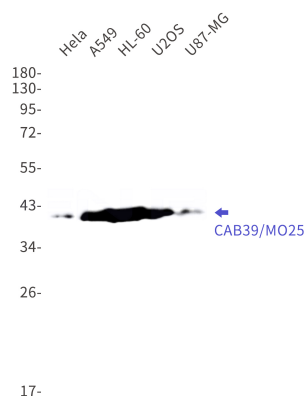
IHC: 1/20

ICC/IF: 1/50

FC: 1/200-1/1000

IP: 1/20

Validations



Western blot detection of CAB39/MO25 in HeLa, A549, HL-60, U2OS, U87-MG cell lysates using CAB39/MO25 Rabbit mAb(1:1000 diluted). Predicted band size: 40kDa. Observed band size: 39kDa.