

Anti-EBOV-G / Glycoprotein antibody



Catalog Number: 100982

Product name

Anti-EBOV-G / Glycoprotein antibody

Immunogen

[EBOV EBOV-G / Glycoprotein \(His Tag\)](#)

Specificity

Ebola virus EBOV (subtype Zaire, strain Mayinga 1976) Glycoprotein / GP

Has cross-reactivity in WB with Ebola virus EBOV (subtype Zaire, strain H.sapiens-wt/GIN/2014/Kissidougou-C15) Glycoprotein / GP Protein (His Tag)(504322); Ebola virus EBOV (subtype Bundibugyo, strain Uganda 2007) Glycoprotein / GP Protein; Ebola virus EBOV (Subtype Sudan, strain Gulu) Glycoprotein / GP Protein (aa:Met1-Asn637, His Tag)(503894)

Antibody description

Rabbit polyclonal to EBOV-G / Glycoprotein

Preparation

Produced in rabbits immunized with purified, recombinant Ebola virus EBOV (subtype Zaire, strain Mayinga 1976) Glycoprotein / GP (AAC54887.1; Met1-Gln650), and purified by antigen affinity chromatography.

Formulation

0.2 µm filtered solution in PBS

Storage

This antibody can be stored at 2°C-8°C for one month without detectable loss of activity. Antibody products are stable for twelve months from date of receipt when stored at -20°C to -80°C. Preservative-Free.

Sodium azide is recommended to avoid contamination (final concentration 0.05%-0.1%). It is toxic to cells and should be disposed of properly. Avoid repeated freeze-thaw cycles.

Clonality

Polyclonal

Ig Type

Rabbit IgG

Applications

WB, IHC-P, IP

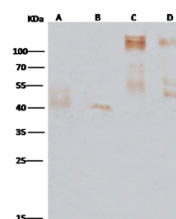
Dilutions

WB: 1-2 µg/ml

ELISA: 0.1-0.2 µg/ml

This antibody can be used at 0.1-0.2 µg/ml with the appropriate secondary reagents to detect Ebola virus EBOV (subtype Zaire, strain Mayinga 1976) Glycoprotein / GP.

Validations



Items	Lanes	A	B	C	D
Sample (Recombinant protein)		GP (Z-EBOV-2014) (Cat#40442-V08B1)	GP (B-EBOV-2007) (Cat#40368-V08B1)	GP (Z-EBOV-1976) (Cat#40304-V08B1)	GP (S-EBOV-2000) (Cat#40094-V08B1)
Sample Volume (ng/lane)		10	10	10	10
Gel		13% SDS-PAGE reducing gel			
Recommended Concentration		1-2µg/ml			
Secondary Antibody		HRP Conjugated Goat-anti-Rabbit IgG (H+L) at 1:1000 dilution			

Ebola virus EBOV (subtype Zaire, strain Mayinga 1976) Glycoprotein / GP Antibody, Rabbit PAb, Antigen Affinity Purified, Western blot