

# PARD3 antibody

Catalog Number: 113582

## Product name

PARD3 antibody

WB: 1:200-1:2000

IP: 1:200-1:1000

## Specificity

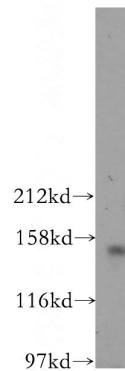
Human, Mouse, Rat; other species not tested.

IHC: 1:20-1:200

## Antibody description

PARD3 Rabbit Polyclonal antibody. Positive WB detected in MCF7 cells. Positive IP detected in MCF-7 cells. Positive FC detected in MCF-7 cells. Positive IHC detected in human colon cancer tissue, human lung cancer tissue. Observed molecular weight by Western-blot: 180, 140-150, 100 kDa

## Validations



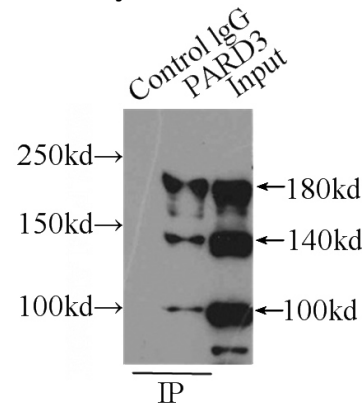
## Preparation

This antibody was obtained by immunization of PARD3 recombinant protein (Accession Number: BC011711). Purification method: Antigen affinity purified.

MCF7 cells were subjected to SDS PAGE followed by western blot with Catalog No:113582(PARD3 antibody) at dilution of 1:300

## Formulation

PBS with 0.1% sodium azide and 50% glycerol pH 7.3.



## Storage

Store at -20°C. DO NOT ALIQUOT

## Clonality

Polyclonal

## Ig Type

Rabbit IgG

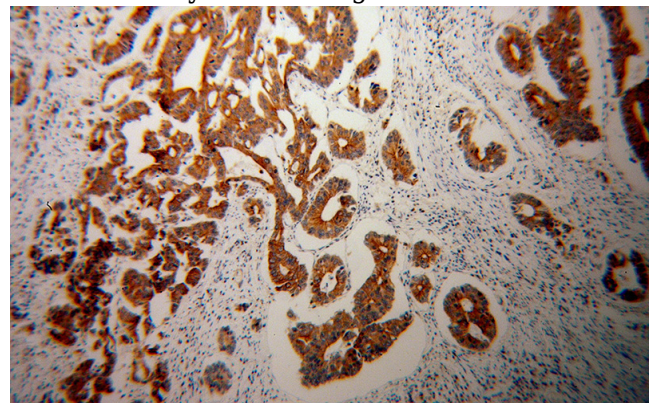
## Applications

ELISA, WB, IHC, FC, IP

## Dilutions

Recommended Dilution:

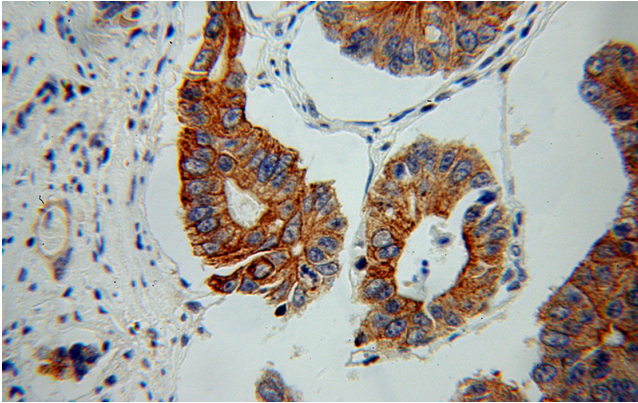
IP Result of anti-PARD3 (IP:Catalog No:113582, 4ug; Detection:Catalog No:113582 1:200) with MCF-7 cells lysate 2900ug.



# PARD3 antibody

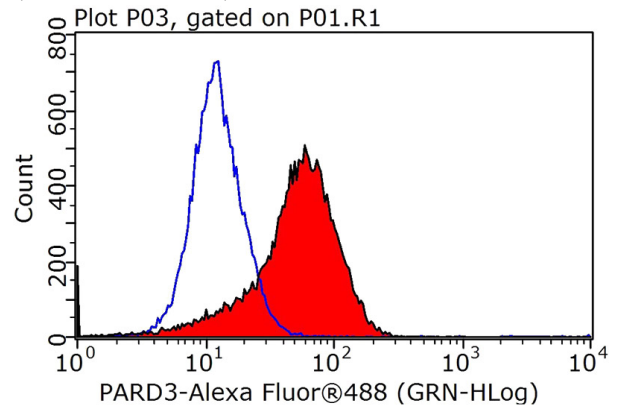
Catalog Number: 113582

Immunohistochemical of paraffin-embedded human colon cancer using Catalog No:113582(PARD3 antibody) at dilution of 1:50 (under 10x lens)



Immunohistochemical of paraffin-embedded human colon cancer using Catalog No:113582(PARD3 antibody) at dilution of 1:50

(under 40x lens)



1X10<sup>6</sup> MCF-7 cells were stained with 0.2ug PARD3 antibody (Catalog No:113582, red) and control antibody (blue). Fixed with 90% MeOH blocked with 3% BSA (30 min). Alexa Fluor 488-conjugated AffiniPure Goat Anti-Rabbit IgG(H+L) with dilution 1:1000.