

Anti-PROM1 antibody



Catalog Number: 142582

Product name

Anti-PROM1 antibody

Specificity

Mouse PROM1

Antibody description

Rabbit Polyclonal to Mouse PROM1

Preparation

Produced in rabbits immunized with a synthetic peptide corresponding to the C-terminus of the Mouse PROM1, and purified by antigen affinity chromatography.

Formulation

0.2 µm filtered solution in PBS

Storage

This antibody can be stored at 2°C-8°C for one month without detectable loss of activity. Antibody products are stable for twelve months from date of receipt when stored at -20°C to -80°C.

Preservative-Free.

Sodium azide is recommended to avoid contamination (final concentration 0.05%-0.1%). It

is toxic to cells and should be disposed of properly. Avoid repeated freeze-thaw cycles.

Clonality

Polyclonal

Ig Type

Rabbit IgG

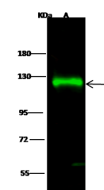
Applications

WB

Dilutions

WB: 5-20 µg/ml

Validations



Items	Lanes	A
Sample		Mouse Kidney Tissue lysate
Sample Volume (µg/lane)		30
Gel		7.5% SDS-PAGE reducing gel
Recommended Concentration		5-20 µg/ml
Secondary Antibody		Dylight 800-labeled Antibody to Rabbit IgG (1:1), at 1:5000 dilution.
Developed using Odyssey imaging system.		
Explanation		Predicted band size : 97 kDa Observed band size : 120 kDa Additional bands at : 59 kDa (We are unsure as to the identity of these extra bands.)

Mouse PROM1 Western blot (WB) 14634