

# Anti-CCDC42 antibody



Catalog Number: 141582

## Product name

Anti-CCDC42 antibody

## Specificity

Human CCDC42

## Antibody description

Rabbit Polyclonal to Human CCDC42

## Preparation

Produced in rabbits immunized with a synthetic peptide corresponding to the center region of the Human CCDC42, and purified by antigen affinity chromatography.

## Formulation

0.2 µm filtered solution in PBS

## Storage

This antibody can be stored at 2°C-8°C for one month without detectable loss of activity. Antibody products are stable for twelve months from date of receipt when stored at -20°C to -80°C.

Preservative-Free.

Sodium azide is recommended to avoid contamination (final concentration 0.05%-0.1%). It

is toxic to cells and should be disposed of properly. Avoid repeated freeze-thaw cycles.

## Clonality

Polyclonal

## Ig Type

Rabbit IgG

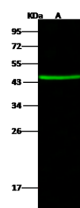
## Applications

WB

## Dilutions

WB: 5-20 µg/ml

## Validations



Lanes	A
Items	
Sample	Mouse heart tissue lysate
Sample Volume (µg/lane)	30
Gel	13% SDS-PAGE reducing gel
Recommended Concentration	5-20 µg/ml
Secondary Antibody	Dylight 800 labeled Antibody to Rabbit IgG (H+L), at 1:5000 dilution.
Explanation	Developed using Odyssey imaging system. Predicted band size : 38 kDa Observed band size : 45 kDa

Human CCDC42 Western blot (WB) 14931