

# Anti-SNAP29 Rabbit antibody



Catalog Number: 167182

## Product name

Anti-SNAP29 Rabbit antibody

## Specificity

Human, Mouse, Rat

## Antibody description

SNAP29 Rabbit polyclonal antibody

## Preparation

Antigen: A synthetic peptide of human SNAP29

## Formulation

Supplied in 50nM Tris-Glycine(pH 7.4), 0.15M NaCl, 40%Glycerol, 0.01% sodium azide and 0.05% BSA.

## Storage

Store at -20°C. Stable for 12 months from date of receipt.

## Clonality

Polyclonal

## Ig Type

Rabbit IgG

## Applications

WB, ICC/IF, FC, IP

## Dilutions

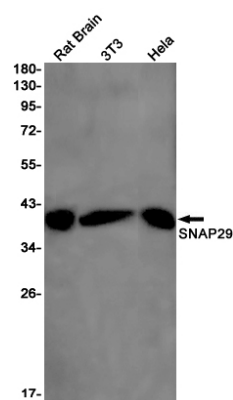
WB: 1/1000-1/5000

ICC/IF: 1/20-1/100

FC: 1/20

IP: 1/20

## Validations



Western blot detection of SNAP29 in Rat Brain, 3T3, HeLa cell lysates using SNAP29 Rabbit pAb(1:1000 diluted). Predicted band size: 29kDa. Observed band size: 29kDa.