

# TMEM27 antibody



Catalog Number: 116182

## Product name

TMEM27 antibody

## Specificity

Human, Mouse; other species not tested.

## Antibody description

TMEM27 Rabbit Polyclonal antibody. Positive WB detected in mouse pancreas tissue, mouse kidney tissue. Positive IF detected in HepG2 cells. Observed molecular weight by Western-blot: 32kd

## Preparation

This antibody was obtained by immunization of TMEM27 recombinant protein (Accession Number: NM\_020665). Purification method: Antigen affinity purified.

## Formulation

PBS with 0.02% sodium azide and 50% glycerol pH 7.3.

## Storage

Store at -20°C. DO NOT ALIQUOT

## Clonality

Polyclonal

## Ig Type

Rabbit IgG

## Applications

ELISA, WB, IF

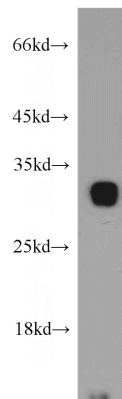
## Dilutions

Recommended Dilution:

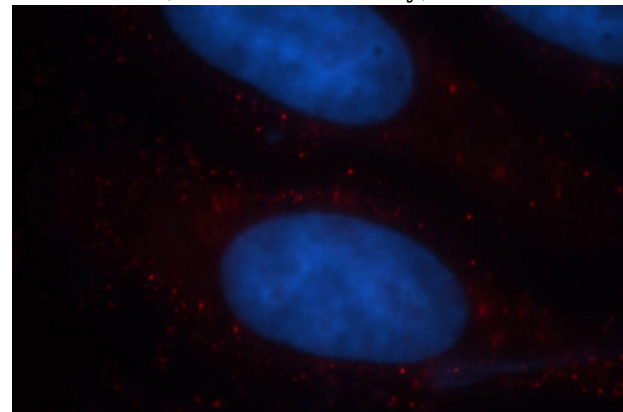
WB: 1:500-1:5000

IF: 1:10-1:100

## Validations



mouse pancreas tissue were subjected to SDS PAGE followed by western blot with Catalog No:116182(TMEM27 antibody) at dilution of 1:500



Immunofluorescent analysis of HepG2 cells, using TMEM27 antibody Catalog No:116182 at 1:25 dilution and Rhodamine-labeled goat anti-rabbit IgG (red). Blue pseudocolor = DAPI (fluorescent DNA dye).