

Anti-Phospho-Histone H3 (Ser10) Rabbit antibody



Catalog Number: 166882

Product name

Anti-Phospho-Histone H3 (Ser10) Rabbit antibody

Specificity

Human

Antibody description

Phospho-Histone H3 (Ser10) Rabbit polyclonal antibody

Preparation

Antigen: Peptide sequence around phosphorylation site of serine 10 (R-K-S(p)-T-G) derived from Human Histone H3.1.

Formulation

Supplied at 1.0mg/mL in phosphate buffered saline (without Mg²⁺ and Ca²⁺), pH 7.4, 150mM NaCl, 0.02% sodium azide and 50% glycerol.

Storage

Store at 4°C short term. Store at -20°C long term. Avoid freeze / thaw cycle.

Clonality

Polyclonal

Ig Type

Rabbit IgG

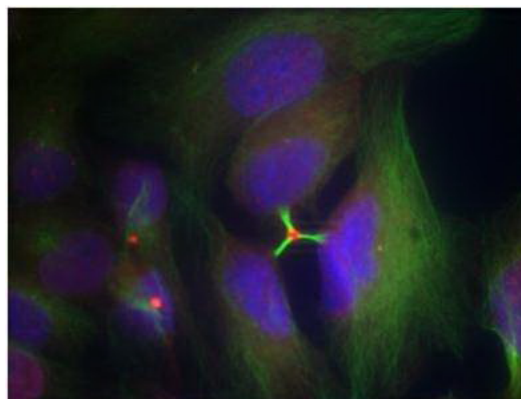
Applications

WB, IHC-P, ICC/IF

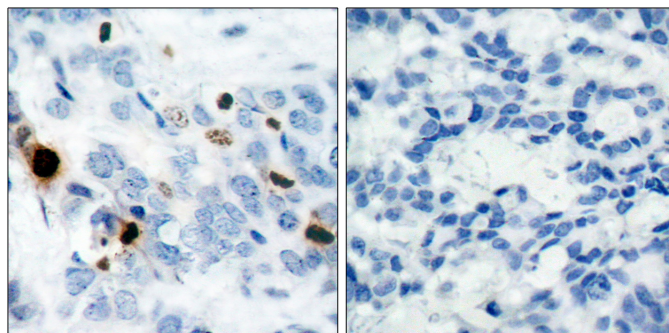
Dilutions

WB:1/500-1/1000 ICC:1/100-1/200 IHC:1/50-1/100

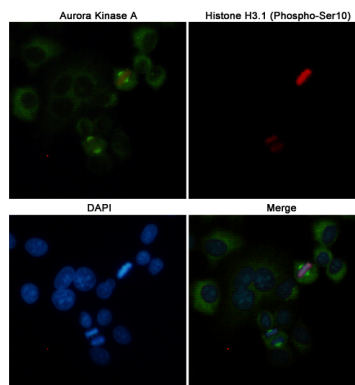
Validations



Immunofluorescence staining of methanol-fixed HeLa cells using Histone H3.1 (Phospho-Ser10) Antibody .



Immunohistochemical analysis of paraffin-embedded human breast carcinoma tissue using Histone H3.1 (Phospho-Ser10) Antibody (left) or the same antibody preincubated with blocking peptide #51184 (right).

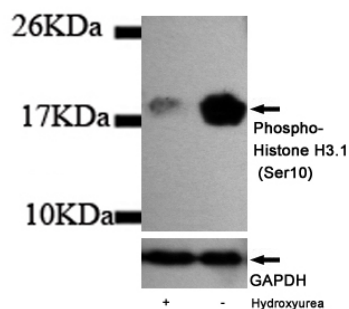


Immunofluorescent analysis of HeLa cells labeled with Aurora Kinase A(200525,dilution 1:50) mouse mAb (green) and Histone H3.1 (Phospho-Ser10)(166882,dilution 1:100) Rabbit pAb (red). DAPI was used to stain nucleus(blue).

Anti-Phospho-Histone H3 (Ser10) Rabbit antibody



Catalog Number: 166882



Western blot analysis of extracts from HeLa cells, untreated or hydroxyurea treated for 5 hours, using Phospho-Histone H3.1(Ser10) Rabbit pAb(1:500 diluted).

Western blot analysis of extracts from HeLa cells, untreated or 1mM hydroxyurea treated for 5 hours, using Phospho-Histone H3.1(Ser10) Rabbit pAb(1:500 diluted).