

# Anti-Calmodulin 2 / CALM2 antibody



Catalog Number: 102882

## Product name

Anti-Calmodulin 2 / CALM2 antibody

## Immunogen

[Human Calmodulin 2 / CALM2 \(His Tag\) recombinant protein](#)

## Specificity

Human Calmodulin 2 / CALM2

## Antibody description

Rabbit polyclonal to Calmodulin 2 / CALM2

## Preparation

Produced in rabbits immunized with purified, recombinant Human Calmodulin 2 / CALM2 (rh Calmodulin 2 / CALM2; P62158; Met1-Lys149). Calmodulin 2 / CALM2 specific IgG was purified by Human Calmodulin 2 / CALM2 affinity chromatography.

## Formulation

0.2 µm filtered solution in PBS with 5% trehalose

## Storage

This antibody can be stored at 2°C-8°C for one month without detectable loss of activity. Antibody products are stable for twelve months from date of receipt when stored at -20°C to -80°C.

Preservative-Free.

Sodium azide is recommended to avoid contamination (final concentration 0.05%-0.1%). It is toxic to cells and should be disposed of

properly. Avoid repeated freeze-thaw cycles.

## Clonality

Polyclonal

## Ig Type

Rabbit IgG

## Applications

ELISA, WB

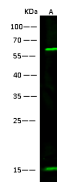
## Dilutions

WB: 10-30 µg/ml

ELISA: 0.1-0.2 µg/mL

This antibody can be used at 0.1-0.2 µg/mL with the appropriate secondary reagents to detect Human Calmodulin 2 / CALM2. The detection limit for Human Calmodulin 2 / CALM2 is < 0.039 ng/well.

## Validations



Items	Lanes
Sample (isolate cell lysate)	A
Sample Volume (µg/lane)	A431
Sample Volume (µg/lane)	30
Gel	13% SDS-PAGE reducing gel
Recommended Concentration	10-30 µg/ml
Secondary Antibody	DyLight 800-labeled Antibody to Rabbit IgG (H+L) at 1:5000 dilution
Explanation	Developed using Odyssey imaging system. Predicted band size : 17 kDa Observed band size : 15 kDa Additional bands at : 63 kDa (We are unsure as to the identity of these extra bands. They are possible non-specific bindings).

Calmodulin 2 / CALM2 Antibody, Rabbit PAb, Antigen Affinity Purified, Western blot