

# JAM2 antibody

Catalog Number: 111882

---

## Product name

Polyclonal

JAM2 antibody

## Ig Type

## Specificity

Rabbit IgG

human, mouse, rat; other species not tested.

## Applications

## Antibody description

ELISA, WB

JAM2 Rabbit Polyclonal antibody. Positive WB detected in human placenta tissue, human heart tissue. Observed molecular weight by Western-blot: 33kd,43kd

## Dilutions

Recommended Dilution:

WB: 1:500-1:5000

## Preparation

This antibody was obtained by immunization of JAM2 recombinant protein (Accession Number: NM\_021219). Purification method: Antigen affinity purified.

## Validations

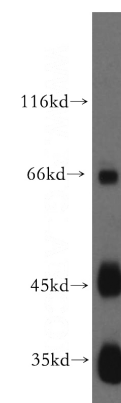
## Formulation

PBS with 0.02% sodium azide and 50% glycerol pH 7.3.

## Storage

Store at -20°C. DO NOT ALIQUOT

## Clonality



human placenta tissue were subjected to SDS PAGE followed by western blot with Catalog No:111882(JAM2 antibody) at dilution of 1:300