

# Phospho-PRKACA-S339 pAb



Catalog Number: 166482

## Product name

Phospho-PRKACA-S339 pAb

## Specificity

Human

## Antibody description

Polyclonal antibody to Phospho-PRKACA-S339

## Preparation

Antigen: A synthetic phosphorylated peptide around S339 of human PRKACA (NP\_002721.1).

## Formulation

PBS with 0.02% sodium azide, 50% glycerol, pH7.3.

## Storage

Store at -20°C. Avoid freeze / thaw cycles.

## Clonality

Polyclonal

## Ig Type

Rabbit IgG

## Applications

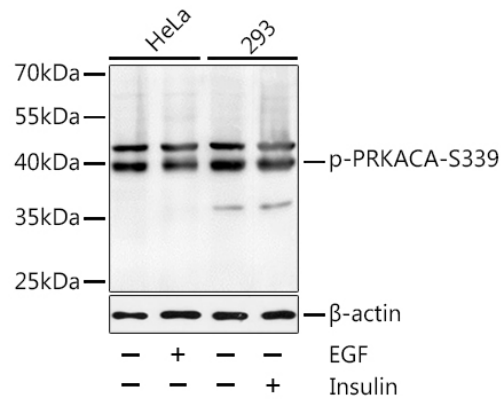
WB, IP

## Dilutions

WB 1:500 - 1:2000

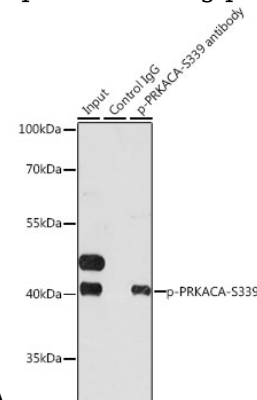
IP 1:50 - 1:100

## Validations



Western blot - Phospho-PRKACA-S339 pAb

Western blot analysis of extracts of HeLa and 293 cells, using Phospho-PRKACA-S339 antibody at 1:1000 dilution. HeLa cells were treated by EGF (100ng/ml) for 30 minutes after serum-starvation overnight. 293T cells were treated by Insulin (100nM) for 10 minutes after serum-starvation overnight. Secondary antibody: HRP Goat Anti-Rabbit IgG (H+L) at 1:10000 dilution. Lysates/proteins: 25ug per lane. Blocking



buffer: 3% BSA.

Immunoprecipitation - Phospho-PRKACA-S339 pAb

Immunoprecipitation analysis of 200ug extracts of HeLa cells, using 3 ug Phospho-PRKACA-S339 pAb. Western blot was performed from the immunoprecipitate using Phospho-PRKACA-S339 pAb at a dilution of 1:1000. HeLa cells were treated by EGF (100 ng/ml) at 37u2103 for 30 minutes after serum-starvation overnight.