

MARS antibody

Catalog Number: 112482

Product name

MARS antibody

IP: 1:1000-1:10000

IF: 1:20-1:200

Specificity

Human, Mouse, Rat; other species not tested.

Antibody description

MARS Rabbit Polyclonal antibody. Positive IF detected in HepG2 cells. Positive IP detected in HepG2 cells. Positive WB detected in HepG2 cells, HeLa cells. Observed molecular weight by Western-blot: 101 kDa

Preparation

This antibody was obtained by immunization of MARS recombinant protein (Accession Number: NM_004990). Purification method: Antigen affinity purified.

Formulation

PBS with 0.02% sodium azide and 50% glycerol pH 7.3.

Storage

Store at -20°C. DO NOT ALIQUOT

Clonality

Polyclonal

Ig Type

Rabbit IgG

Applications

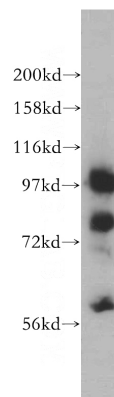
ELISA, WB, IF, IP

Dilutions

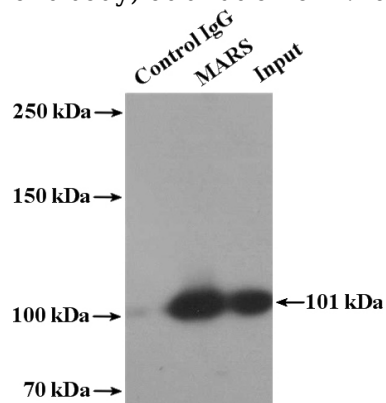
Recommended Dilution:

WB: 1:1000-1:10000

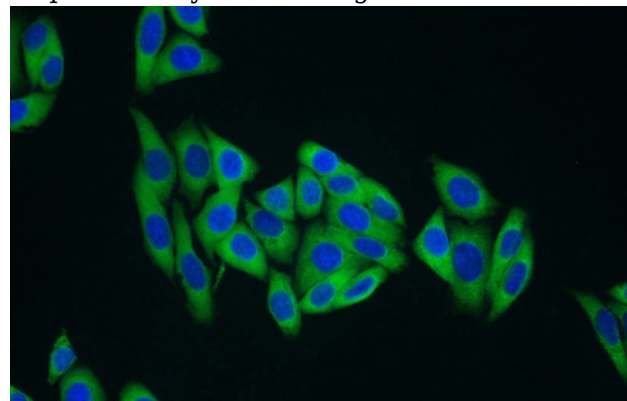
Validations



HepG2 cells were subjected to SDS PAGE followed by western blot with Catalog No:112482(MARS antibody) at dilution of 1:2000



IP Result of anti-MARS (IP:Catalog No:112482, 4ug; Detection:Catalog No:112482 1:2000) with HepG2 cells lysate 4000ug.



Immunofluorescent analysis of HepG2 cells using Catalog No:112482(MARS Antibody) at dilution of

MARS antibody



Catalog Number: 112482

1:50 and Alexa Fluor 488-conjugated AffiniPure

Goat Anti-Rabbit IgG(H+L)