

Anti-CDC42BPA antibody



Catalog Number: 176082

Product name

Anti-CDC42BPA antibody

Specificity

Human, Mouse, Rat

Antibody description

Rabbit polyclonal antibody to CDC42BPA

Preparation

This antigen of this antibody was synthesized peptide derived from the internal region of human mrck α .

Formulation

Liquid, Liquid in PBS containing 50% glycerol, 0.5% BSA and 0.02% sodium azide.

Storage

Store at +4°C after thawing. Aliquot store at -20°C or -80°C. Avoid repeated freeze / thaw cycles.

Clonality

Polyclonal

Ig Type

Rabbit IgG

Applications

WB

Dilutions

WB: 1:500-1:2000

Validations

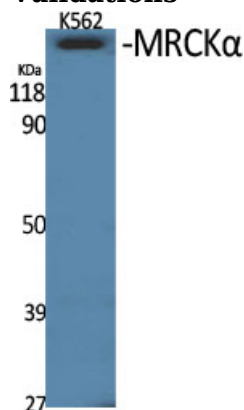


Fig1.; Western Blot analysis of various cells using MRCK α Polyclonal Antibody