

# Anti-PRAME Rabbit antibody



Catalog Number: 168772

## Product name

Anti-PRAME Rabbit antibody

## Specificity

Human

## Antibody description

PRAME Rabbit monoclonal antibody

## Preparation

Antigen: Recombinant protein of human PRAME

## Formulation

Supplied in 50nM Tris-Glycine(pH 7.4), 0.15M NaCl, 40%Glycerol, 0.01% sodium azide and 0.05% BSA.

## Storage

Store at 4°C short term. Aliquot and store at -20°C long term. Avoid freeze / thaw cycle.

## Clonality

Monoclonal

## Ig Type

Rabbit IgG

## Applications

WB, IHC-P, ICC/IF, FC, IP

## Dilutions

1:1000

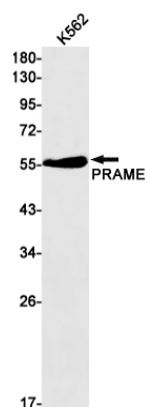
1:500

1:50

1:50

1:20

## Validations



Western blot detection of PRAME in K562 cell lysates using PRAME Rabbit mAb(1:1000 diluted).Predicted band size:58kDa.Observed band size:58kDa.